

Anti-Calpain-6 CAPN6 Antibody

Catalog Number: A09778

About CAPN6

Calpains make up a ubiquitously expressed, well-conserved family of calcium-dependent cysteine proteases. The calpain proteins are heterodimers consisting of an invariant small subunit and variable large subunits. This large subunit possesses a cysteine protease domain, and both subunits possess calcium-binding domains. Calpains have been implicated in neurodegenerative processes as their activation can be triggered by calcium influx and oxidative stress. Calpain 6 (CAPN6) is most similar to Calpain 5; the C-terminal region of CAPN6 lacks homology to the calmodulin-like domain of other vertebrate calpains. CAPN6 is thought to be involved in the regulation of microtubule dynamics and cytoskeletal organization. CAPN6 has also been recently identified as an HIV dependency factor (HDF), suggesting that CAPN6 may be an important drug target in HIV treatment.

Overview

Product Name	Anti-Calpain-6 CAPN6 Antibody
Reactive Species	Human, Mouse, Rat
Description	Boster Bio Anti-Calpain-6 CAPN6 Antibody (Catalog # A09778). Tested in ELISA, WB, IHC-P, IF applications. This antibody reacts with Human, Mouse, Rat.
Application	ELISA, IF, IHC-P, WB
Clonality	Polyclonal
Formulation	CAPN6 Antibody is supplied in PBS containing 0.02% sodium azide.
Storage Instructions	CAPN6 antibody can be stored at 4°C for three months and -20°C, stable for up to one year. Avoid repeated freeze-thaw cycles. Antibodies should not be exposed to prolonged high temperatures.
Host	Rabbit
Uniprot ID	Q9Y6Q1

Technical Details

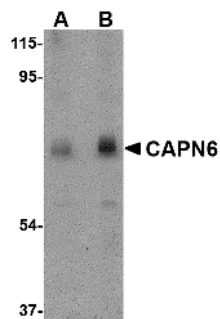
Immunogen	CAPN6 antibody was raised against a 18 amino acid synthetic peptide from near the carboxy terminus of human CAPN6. The immunogen is located within the last 50 amino acids of CAPN6.
Predicted Reactive Species	Mouse, Rat
Isotype	IgG
Form	Liquid
Concentration	1 mg/mL
Purification	CAPN6 Antibody is Protein A purified.

Suggested Dilutions

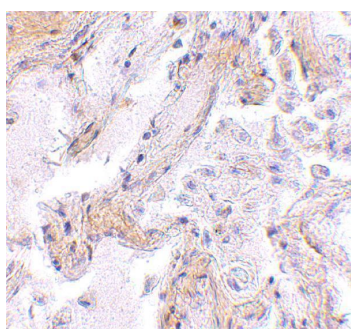
CAPN6 antibody can be used for the detection of StrepII by Western blot at 0.5 - 1 ug/mL. Antibody can also be used for immunohistochemistry starting at 2.5 ug/mL. For immunofluorescence start at 20 ug/mL.

Antibody validated: Western Blot in rat samples; Immunohistochemistry in human samples and Immunofluorescence in human samples. All other applications and species not yet tested. Optimal dilutions for each application should be determined by the researcher.

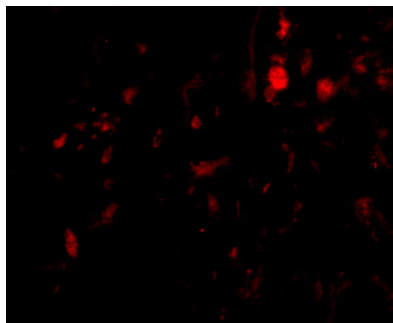
Anti-Calpain-6 CAPN6 Antibody (A09778) Images



Western blot analysis of CAPN6 in rat lung tissue lysate with CAPN6 antibody at (A) 0.5 and (B) 1 ug/mL.



Immunohistochemistry of CAPN6 in human lung tissue with CAPN6 antibody at 2.5 ug/mL.



Immunofluorescence of CAPN6 in Human Lung cells with CAPN6 antibody at 20 ug/mL.

Submit a product review to [Biocompare.com](https://www.biocompare.com)

Submit a review of this product to [Biocompare.com](https://www.biocompare.com) to receive a \$20 Amazon.com giftcard! Your reviews help your fellow scientists make the right decisions. Thank you for your contribution.



Anti-Calpain-6 CAPN6 Antibody

For Research Use Only. Not for use in diagnostic procedures.