

Anti-IL-20 beta IL20RB Antibody

Catalog Number: A09784-2

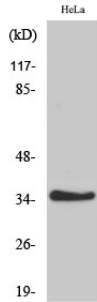
Overview

| | |
|----------------------|---|
| Product Name | Anti-IL-20 beta IL20RB Antibody |
| Reactive Species | Human, Mouse |
| Description | Boster Bio Anti-IL-20 beta IL20RB Antibody catalog # A09784-2. Tested in ELISA, IHC, WB applications. This antibody reacts with Human, Mouse. |
| Application | ELISA, IF, IHC, WB |
| Clonality | Polyclonal |
| Formulation | Liquid in PBS containing 50% glycerol, 0.5% stabilizing protein and 0.02% sodium azide. This antibody is supplied in a stabilized formulation. Compatibility with conjugation reactions depends on the chemistry of the conjugation method used. For conjugation methods that are not compatible with the stabilizing components present in this formulation, a carrier-free antibody format is required. |
| Storage Instructions | Store at -20°C for one year. For short term storage and frequent use, store at 4°C for up to one month. Avoid repeated freeze-thaw cycles. |
| Host | Rabbit |
| Uniprot ID | Q6UXL0 |

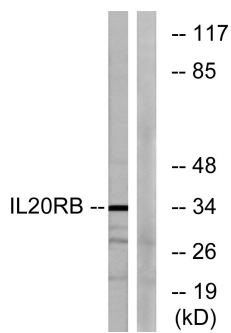
Technical Details

| | |
|---------------------|---|
| Immunogen | The antiserum was produced against synthesized peptide derived from human IL20RB. AA range:141-190 |
| Isotype | IgG |
| Form | Liquid |
| Concentration | 1 mg/ml |
| Purification | The antibody was affinity-purified from rabbit antiserum by affinity-chromatography using epitope-specific immunogen. |
| Suggested Dilutions | WB 1:500-1:2000 IHC 1:100-1:300 ELISA 1:20000 IF 1:50-200 |

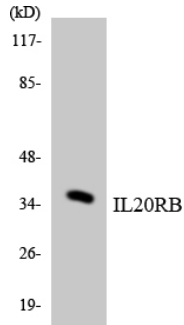
Anti-IL-20 beta IL20RB Antibody (A09784-2) Images



Western Blot analysis of various cells using IL-20Rbeta Polyclonal Antibody



Western blot analysis of lysates from HeLa cells, using IL20RB Antibody. The lane on the right is blocked with the synthesized peptide.



Western blot analysis of the lysates from COLO205 cells using IL20RB antibody.

Submit a product review to Biocompare.com

Submit a review of this product to Biocompare.com to receive a \$20 Amazon.com giftcard! Your reviews help your fellow scientists make the right decisions. Thank you for your contribution.



Anti-IL-20 beta IL20RB Antibody

For Research Use Only. Not for use in diagnostic procedures.