

Anti-Ephrin type-A receptor 10 EphA10 Antibody

Catalog Number: A09787

About EPHA10

Eph receptors, the largest subfamily of receptor tyrosine kinases (RTKs), and their ephrin ligands are important mediators of cell-cell communication regulating cell attachment, shape, and mobility of neuronal and endothelial cells in central nervous system function and in development. Eph receptors can be divided into two subgroups: EphA and EphB. In mammals, the EphA class consists of eight members (EphA 1-7 and 10) that in general bind to ephrin-A members linked to the cell membrane through a glycosylphosphatidylinositol linkage. The EphB class consists of six members (EphB 1-6) that in general bind ephrin-B members that transverse the cell membrane. The Ephrin / EPH signaling pathway networks with the WNT signaling pathway during embryogenesis, tissue regeneration, and carcinogenesis. Recent studies show that Eph/EFN might be relevant in normal B-cell biology and could represent new potential prognostic markers and therapeutic targets for CLL.

Overview

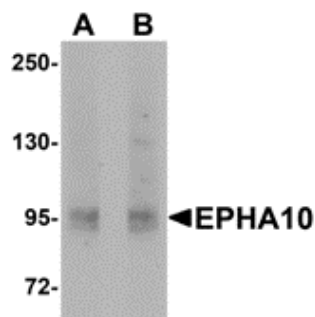
Product Name	Anti-Ephrin type-A receptor 10 EphA10 Antibody
Reactive Species	Human, Mouse, Rat
Description	Boster Bio Anti-Ephrin type-A receptor 10 EphA10 Antibody (Catalog # A09787). Tested in ELISA, WB applications. This antibody reacts with Human, Mouse, Rat.
Application	ELISA, WB
Clonality	Polyclonal Clone: SK7
Formulation	EphA10 Antibody is supplied in PBS containing 0.02% sodium azide.
Storage Instructions	EphA10 antibody can be stored at 4°C for three months and -20°C, stable for up to one year. Avoid repeated freeze-thaw cycles. Antibodies should not be exposed to prolonged high temperatures.
Host	Rabbit
Uniprot ID	Q5JZY3

Technical Details

Immunogen	EphA10 antibody was raised against a 14 amino acid synthetic peptide of near the amino terminus of human EphA10. The immunogen is located within amino acids 120 - 170 of EphA10.
Predicted Reactive Species	Mouse, Rat
Cross Reactivity	SLC36A2 antibody is human specific. SLC36A2 is predicted to not cross-react with other members of the SLC36 protein family.
Isotype	IgG
Form	Liquid

Concentration	1 mg/mL
Purification	EphA10 Antibody is affinity chromatography purified via peptide column.
Suggested Dilutions	<p>Dilute the sample so that the expected range of concentrations fall within the detection range of this kit.</p> <p>If the expected range of concentration is unknown, a pilot test should be conducted to decide the optimal dilution ratio for your samples.</p> <p>Some PubMed article(s) citing the expression level of this target are as follows:</p> <p>Boster Bio's internal QC testing used:</p> <p>EphA10 antibody can be used for detection of EphA10 by Western blot at 1 - 2 ug/mL.</p> <p>Antibody validated: Western Blot in human samples. All other applications and species not yet tested. Optimal dilutions for each application should be determined by the researcher.</p>

Anti-Ephrin type-A receptor 10 EphA10 Antibody (A09787) Images



Submit a product review to Biocompare.com

Submit a review of this product to Biocompare.com to receive a \$20 Amazon.com giftcard! Your reviews help your fellow scientists make the right decisions. Thank you for your contribution.



Anti-Ephrin type-A receptor 10 EphA10 Antibody