

Anti-Cysteine protease ATG4D ATG4D Antibody

Catalog Number: A09793

About ATG4D

Autophagy, the process of bulk degradation of cellular proteins through an autophagosomic-lysosomal pathway is important for normal growth control and may be defective in tumor cells. It is involved in the preservation of cellular nutrients under starvation conditions as well as the normal turnover of cytosolic components (1,2). ATG4D, also known as AUTL4, is one of four mammalian orthologs of the yeast ATG4 protein; all four are cysteine proteases (3). ATG4 is required for ATG8 conjugation to phosphatidylethanolamine on autophagosomal membranes. In mammals, each ATG4 homolog shows a selective preference for the ATG8 homologs (4).

Overview

Product Name	Anti-Cysteine protease ATG4D ATG4D Antibody
Reactive Species	Human, Mouse, Rat
Description	Boster Bio Anti-Cysteine protease ATG4D ATG4D Antibody (Catalog # A09793). Tested in ELISA, WB, IHC-P, IF applications. This antibody reacts with Human, Mouse, Rat.
Application	ELISA, IF, IHC-P, WB
Clonality	Polyclonal
Formulation	ATG4D antibody is supplied in PBS containing 0.02% sodium azide.
Storage Instructions	ATG4D antibody can be stored at 4°C for three months and -20°C, stable for up to one year.
Host	Rabbit
Uniprot ID	Q86TLO

Technical Details

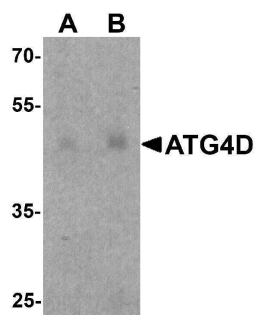
Immunogen	ATG4D antibody was raised against a 17 amino acid peptide near the amino terminus of human ATG4D. The immunogen is located within the first 50 amino acids of ATG4D.
Predicted Reactive Species	Bovine, Mouse, Rat
Cross Reactivity	ATG4D antibody is human, mouse and rat reactive. At least two isoforms of ATG4D are known to exist; this antibody will detect only the larger isoform. ATG4D is predicted to not cross-react with other ATG4 proteins.
Isotype	IgG
Form	Liquid
Concentration	1 mg/mL
Purification	ATG4D antibody is affinity chromatography purified via peptide column.

Suggested Dilutions

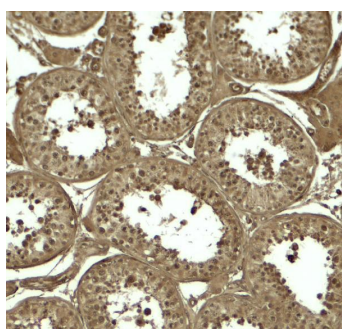
ATG4D antibody can be used for detection of ATG4D by Western blot at 1 - 2 ug/ml. Antibody can also be used for immunohistochemistry starting at 5 ug/mL. For immunofluorescence start at 20 ug/mL.

Antibody validated: Western Blot in human samples; Immunohistochemistry in human samples and Immunofluorescence in human samples. All other applications and species not yet tested. Optimal dilutions for each application should be determined by the researcher.

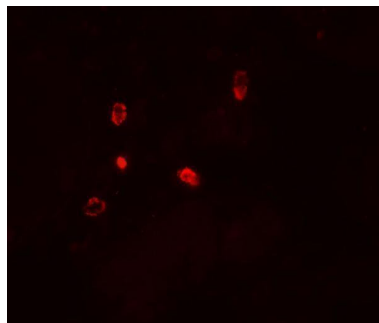
Anti-Cysteine protease ATG4D ATG4D Antibody (A09793) Images



Western blot analysis of ATG4D in human testis tissue lysate with ATG4D antibody at (A) 1 and (B) 2 ug/ml.



Immunohistochemistry of ATG4D in human testis tissue with ATG4D antibody at 5 ug/ml.



Immunofluorescence of ATG4D in human testis tissue with ATG4D antibody at 20 ug/ml.

Submit a product review to [Biocompare.com](https://www.biocompare.com)

Submit a review of this product to [Biocompare.com](https://www.biocompare.com) to receive a \$20 Amazon.com giftcard! Your reviews help your fellow scientists make the right decisions. Thank you for your contribution.



Anti-Cysteine protease ATG4D ATG4D Antibody

For Research Use Only. Not for use in diagnostic procedures.