

Anti-IL-1F6 IL36A Antibody

Catalog Number: A09802

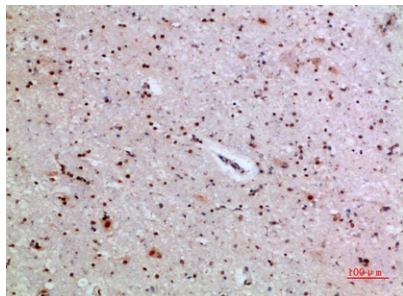
Overview

Product Name	Anti-IL-1F6 IL36A Antibody
Reactive Species	Human, Mouse
Description	Boster Bio Anti-IL-1F6 IL36A Antibody catalog # A09802. Tested in IHC, IF, ELISA applications. This antibody reacts with Human, Mouse.
Application	ELISA, IF, IHC
Clonality	Polyclonal
Formulation	PBS, pH 7.4, containing 0.02% sodium azide as Preservative and 50% Glycerol.
Storage Instructions	Store at -20°C for one year. For short term storage and frequent use, store at 4°C for up to one month. Avoid repeated freeze-thaw cycles.
Host	Rabbit
Uniprot ID	Q9UHA7

Technical Details

Immunogen	The antiserum was produced against synthesized peptide derived from the Internal region of human IL36A. AA range:21-70
Isotype	IgG
Form	Liquid
Concentration	1 mg/ml
Purification	Immunogen affinity purified
Suggested Dilutions	IHC 1:50-200 ELISA 1:10000-20000 IF 1:50-200

Anti-IL-1F6 IL36A Antibody (A09802) Images



Immunohistochemical analysis of paraffin-embedded human-brain, antibody was diluted at 1:200

Submit a product review to Biocompare.com

Submit a review of this product to Biocompare.com to receive a \$20 Amazon.com giftcard! Your reviews help your fellow scientists make the right decisions. Thank you for your contribution.



Anti-IL-1F6 IL36A Antibody

For Research Use Only. Not for use in diagnostic procedures.