

Anti-PGLYRP4 Antibody Picoband®

Catalog Number: A09834-1

About PGLYRP4

Summary: This gene encodes a peptidoglycan recognition protein, which belongs to the N-acetylmuramoyl-L-alanine amidase 2 family. These proteins are part of the innate immune system and recognize peptidoglycan, a ubiquitous component of bacterial cell walls. This antimicrobial protein binds to murein peptidoglycans of Gram-positive bacteria.

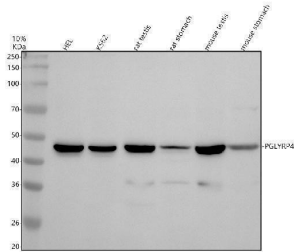
Overview

Product Name	Anti-PGLYRP4 Antibody Picoband®
Reactive Species	Human, Mouse, Rat
Description	Boster Bio Anti-PGLYRP4 Antibody Picoband® catalog # A09834-1. Tested in WB, Flow Cytometry applications. This antibody reacts with Human, Mouse, Rat. The brand Picoband indicates this is a premium antibody that guarantees superior quality, high affinity, and strong signals with minimal background in Western blot applications. Only our best-performing antibodies are designated as Picoband, ensuring unmatched performance.
Application	Flow Cytometry, WB
Clonality	Polyclonal
Formulation	Each vial contains 4 mg Trehalose, 0.9 mg NaCl, 0.2 mg Na ₂ HPO ₄ .
Storage Instructions	At -20°C for one year from date of receipt. After reconstitution, at 4°C for one month. It can also be aliquotted and stored frozen at -20°C for six months. Avoid repeated freezing and thawing.
Host	Rabbit
Uniprot ID	Q96LB8

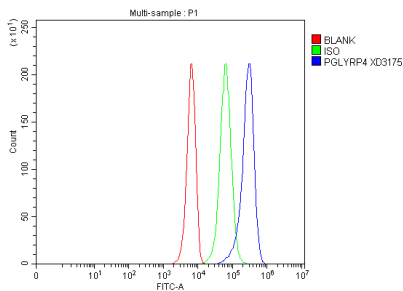
Technical Details

Immunogen	A synthetic peptide corresponding to a sequence at the C-terminus of human PGLYRP4. Human PGLYRP4 shares 77.8% amino acid (aa) sequence identity with mouse PGLYRP4.
Form	Lyophilized
Concentration	Adding 0.2 ml of distilled water will yield a concentration of 500 ug/ml.
Purification	Immunogen affinity purified.
Suggested Dilutions	Western blot, 0.25-0.5 ug/ml, Human, Mouse, Rat Flow Cytometry (Fixed), 1-3 ug/1x10 ⁶ cells, Human

Anti-PGLYRP4 Antibody Picoband® (A09834-1) Images



Western blot analysis of PGLYRP4 using anti-PGLYRP4 antibody (A09834-1). Electrophoresis was performed on a 10% SDS-PAGE gel at 80V (Stacking gel) / 120V (Resolving gel) for 2 hours. The sample well of each lane was loaded with 30 ug of sample under reducing conditions. Lane 1: human HEL whole cell lysates, Lane 2: human K562 whole cell lysates, Lane 3: rat testis tissue lysates, Lane 4: rat stomach tissue lysates, Lane 5: mouse testis tissue lysates, Lane 6: mouse stomach tissue lysates. After electrophoresis, proteins were transferred to a nitrocellulose membrane at 150 mA for 50-90 minutes. Blocked the membrane with 5% non-fat milk/TBS for 1.5 hour at RT. The membrane was incubated with rabbit anti-PGLYRP4 antigen affinity purified polyclonal antibody (A09834-1) at 0.5 ug/mL overnight at 4°C, then washed with TBS-0.1% Tween 3 times with 5 minutes each and probed with a goat anti-rabbit IgG-HRP secondary antibody at a dilution of 1:5000 for 1.5 hour at RT. The signal is developed using an ECL Plus Western Blotting Substrate (Catalog # AR1196-200) with Tanon 5200 system. A specific band was detected for PGLYRP4 at approximately 46 kDa. The expected band size for PGLYRP4 is at 41 kDa.



Flow Cytometry analysis of K562 cells using anti-PGLYRP4 antibody (A09834-1). Overlay histogram showing K562 cells stained with A09834-1 (Blue line). The cells were fixed with 4% paraformaldehyde and blocked with 10% normal goat serum. And then incubated with rabbit anti-PGLYRP4 Antibody (A09834-1, 1 ug/1x10⁶ cells) for 30 min at 20°C. DyLight®488 conjugated goat anti-rabbit IgG (BA1127, 5-10 ug/1x10⁶ cells) was used as secondary antibody for 30 minutes at 20°C. Isotype control antibody (Green line) was rabbit IgG (1 ug/1x10⁶) used under the same conditions. Unlabelled sample without incubation with primary antibody and secondary antibody (Red line) was used as a blank control.

Submit a product review to Biocompare.com

Submit a review of this product to Biocompare.com to receive a \$20 Amazon.com giftcard! Your reviews help your fellow scientists make the right decisions. Thank you for your contribution.



Anti-PGLYRP4 Antibody

For Research Use Only. Not for use in diagnostic procedures.