

Anti-CD163b CD163L1 Antibody

Catalog Number: A09845

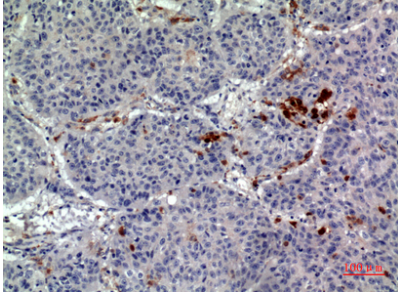
Overview

Product Name	Anti-CD163b CD163L1 Antibody
Reactive Species	Human
Description	Boster Bio Anti-CD163b CD163L1 Antibody catalog # A09845. Tested in WB, IHC, IF, ELISA applications. This antibody reacts with Human.
Application	ELISA, IF, IHC, WB
Clonality	Polyclonal
Formulation	Liquid in PBS containing 50% glycerol, 0.5% stabilizing protein and 0.02% sodium azide. This antibody is supplied in a stabilized formulation. Compatibility with conjugation reactions depends on the chemistry of the conjugation method used. For conjugation methods that are not compatible with the stabilizing components present in this formulation, a carrier-free antibody format is required.
Storage Instructions	Store at -20°C for one year. For short term storage and frequent use, store at 4°C for up to one month. Avoid repeated freeze-thaw cycles.
Host	Rabbit
Uniprot ID	Q9NR16

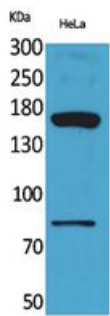
Technical Details

Immunogen	The antiserum was produced against synthesized peptide derived from the Internal region of human CD163L1. AA range:391-440
Isotype	IgG
Form	Liquid
Concentration	1 mg/ml
Purification	Immunogen affinity purified
Suggested Dilutions	WB 1:500-1:2000 IHC: 1:100-1:300 ELISA 1:20000 IF 1:50-200

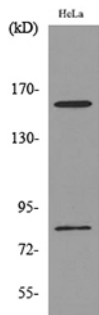
Anti-CD163b CD163L1 Antibody (A09845) Images



Immunohistochemical analysis of paraffin-embedded human lung, antibody was diluted at 1:100



Western Blot analysis of HeLa cells using CD163b Polyclonal Antibody. Secondary antibody was diluted at 1:20000



Western blot analysis of lysate from HeLa cells, using CD163L1 Antibody.

Submit a product review to Biocompare.com

Submit a review of this product to Biocompare.com to receive a \$20 Amazon.com giftcard! Your reviews help your fellow scientists make the right decisions. Thank you for your contribution.



Anti-CD163b CD163L1 Antibody

For Research Use Only. Not for use in diagnostic procedures.