

Anti-AMSH-LP/STAMBPL1 Antibody Picoband®

Catalog Number: A09862-1

About STAMBPL1

STAMBPL1 (STAM-binding protein-like 1), also known as AMSH-FP, AMSH-LP (associated molecule with the SH3 domain of STAM like protein) or ALMa, is a 436 amino acid protein that belongs to the peptidase M67C family, contains one MPN domain and a JAMM motif that is essential for protease activity. Existing as two alternatively spliced isoforms, STAMBPL1 is a ubiquitously expressed protein that binds two zinc ions per subunit and acts as a zinc metalloprotease that specifically cleaves Lys-63-linked polyubiquitin chains. The gene that encodes STAMBPL1 maps to human chromosome 10q23.31. Chromosome 10 contains over 800 genes and 135 million nucleotides, making up nearly 4.5% of the human genome. PTEN is an important tumor suppressor gene located on chromosome 10 and, when defective, causes a genetic predisposition to cancer development known as Cowden syndrome. The chromosome 10 encoded gene ERCC6 is important for DNA repair and is linked to Cockayne syndrome which is characterized by extreme photosensitivity and premature aging. Tetrahydrobiopterin deficiency and a number of syndromes involving defective skull and facial bone fusion are also linked to chromosome 10.

Overview

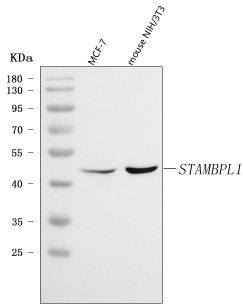
Product Name	Anti-AMSH-LP/STAMBPL1 Antibody Picoband®
Reactive Species	Human, Mouse
Description	Boster Bio Anti-AMSH-LP/STAMBPL1 Antibody Picoband® catalog # A09862-1. Tested in ELISA, Flow Cytometry, WB applications. This antibody reacts with Human, Mouse. The brand Picoband indicates this is a premium antibody that guarantees superior quality, high affinity, and strong signals with minimal background in Western blot applications. Only our best-performing antibodies are designated as Picoband, ensuring unmatched performance.
Application	ELISA, Flow Cytometry, WB
Clonality	Polyclonal
Formulation	Each vial contains 4 mg Trehalose, 0.9 mg NaCl, 0.2 mg Na ₂ HPO ₄ .
Storage Instructions	At -20°C for one year from date of receipt. After reconstitution, at 4°C for one month. It can also be aliquotted and stored frozen at -20°C for six months. Avoid repeated freezing and thawing.
Host	Rabbit
Uniprot ID	Q96FJO

Technical Details

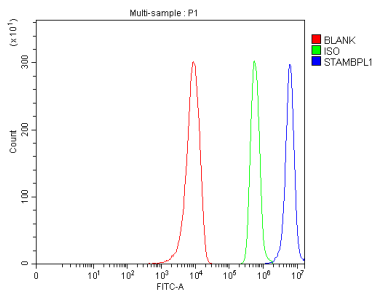
Immunogen	E.coli-derived human AMSH-LP/STAMBPL1 recombinant protein (Position: Q187-R436).
Recommended Detection Systems	Boster recommends Enhanced Chemiluminescent Kit with anti-Rabbit IgG (EK1002) for Western blot.
Cross Reactivity	No cross-reactivity with other proteins.

Isotype	Rabbit IgG
Form	Lyophilized
Concentration	Adding 0.2 ml of distilled water will yield a concentration of 500 µg/ml.
Purification	Immunogen affinity purified.
Suggested Dilutions	Western blot, 0.25-0.5 ug/ml, Human, Mouse Flow Cytometry (Fixed), 1-3 ug/1x10 ⁶ cells, Human ELISA, 0.1-0.5 ug/ml, -

Anti-AMSH-LP/STAMBPL1 Antibody Picoband® (A09862-1) Images



Western blot analysis of AMSH-LP/STAMBPL1 using anti-AMSH-LP/STAMBPL1 antibody (A09862-1). Electrophoresis was performed on a 5-20% SDS-PAGE gel at 70V (Stacking gel) / 90V (Resolving gel) for 2-3 hours. The sample well of each lane was loaded with 30 ug of sample under reducing conditions. Lane 1: human MCF-7 whole cell lysates, Lane 2: mouse NIH/3T3 whole cell lysates. After electrophoresis, proteins were transferred to a nitrocellulose membrane at 150 mA for 50-90 minutes. Blocked the membrane with 5% non-fat milk/TBS for 1.5 hour at RT. The membrane was incubated with rabbit anti-AMSH-LP/STAMBPL1 antigen affinity purified polyclonal antibody (Catalog # A09862-1) at 0.5 ug/mL overnight at 4°C, then washed with TBS-0.1%Tween 3 times with 5 minutes each and probed with a goat anti-rabbit IgG-HRP secondary antibody at a dilution of 1:5000 for 1.5 hour at RT. The signal is developed using an Enhanced Chemiluminescent detection (ECL) kit (Catalog # EK1002) with Tanon 5200 system. A specific band was detected for AMSH-LP/STAMBPL1 at approximately 50 kDa. The expected band size for AMSH-LP/STAMBPL1 is at 50 kDa.



Flow Cytometry analysis of 293T cells using anti-AMSH-LP/STAMBPL1 antibody (A09862-1). Overlay histogram showing 293T cells stained with A09862-1 (Blue line). To facilitate intracellular staining, cells were fixed with 4% paraformaldehyde and permeabilized with permeabilization buffer. The cells were blocked with 10% normal goat serum. And then incubated with rabbit anti-AMSH-LP/STAMBPL1 Antibody (A09862-1, 1 ug/1x10⁶ cells) for 30 min at 20°C. DyLight®488 conjugated goat anti-rabbit IgG (BA1127, 5-10 ug/1x10⁶ cells) was used as secondary antibody for 30 minutes at 20°C. Isotype control antibody (Green line) was rabbit IgG (1 ug/1x10⁶) used under the same conditions. Unlabelled sample without incubation with primary antibody and secondary antibody (Red line) was used as a blank control.

Submit a product review to Biocompare.com

Submit a review of this product to Biocompare.com to receive a \$20 Amazon.com giftcard! Your reviews help your fellow scientists make the right decisions. Thank you for your contribution.



Anti-AMSH-LP/STAMBPL1 Antibody

For Research Use Only. Not for use in diagnostic procedures.