

## Anti-LIM domain-binding protein 2 LDB2 Antibody

Catalog Number: A09871

### About LDB2

LDB2 (LIM homeobox protein cofactor CLIM-1a). It is suggested that LIM domain binding proteins (LDB1, LDB2 and LDB3) act synergistically to enhance transcriptional efficiency by acting as co-factors for LIM homeodomain and Otx class transcription factors both of which have essential roles in development. LDB2 is a close homologue of LDB1. LDBs are homologs of the Drosophila Chip protein. Three members of the Ldb gene family (Ldb1, Ldb2 and Ldb3) from the zebrafish, Danio rerio, share 95%, 73% and 62% amino acid identity with mouse Ldb1, respectively.

### Overview

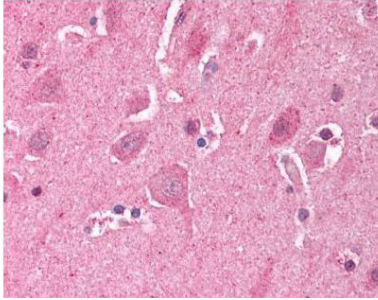
Product Name	Anti-LIM domain-binding protein 2 LDB2 Antibody
Reactive Species	Human, Mouse
Description	Boster Bio Anti-LIM domain-binding protein 2 LDB2 Antibody (Catalog # A09871). Tested in ELISA, IHC, WB applications. This antibody reacts with Human, Mouse.
Application	ELISA, IHC, WB
Clonality	Polyclonal
Formulation	0.02 M Potassium Phosphate, 0.15 M Sodium Chloride, pH 7.2, 0.01% (w/v) Sodium Azide
Storage Instructions	Store vial at -20°C prior to opening. Aliquot contents and freeze at -20°C or below for extended storage. Avoid cycles of freezing and thawing. Centrifuge product if not completely clear after standing at room temperature. This product is stable for several weeks at 4°C as an undiluted liquid. Dilute only prior to immediate use. Expiration date is one (1) year from date of opening. (Ship on dry ice.)
Host	Rabbit
Uniprot ID	O55203

### Technical Details

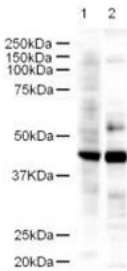
Immunogen	This affinity purified antibody was prepared from whole rabbit serum produced by repeated immunizations with a synthetic peptide corresponding to an internal region near aa 100-125 of Mouse LDB2.
Predicted Reactive Species	Canine, Chicken, Chimpanzee
Cross Reactivity	No cross reactivity with other proteins.
Isotype	IgG
Form	Liquid (sterile filtered)
Concentration	1.06 mg/mL by UV absorbance at 280 nm

Purification	This affinity purified antibody is directed against mouse LDB2. The product was affinity purified from monospecific antiserum by immunoaffinity purification. A BLAST analysis was used to suggest reactivity with this protein from mouse, human, chimpanzee, dog, rat and chicken based on 100% homology for the immunogen sequence. Cross-reactivity with LDB2 homologues from other sources has not been determined.
Suggested Dilutions	ELISA: 1:5,000 - 1:20,000 IHC: 5 µg/ml WB: 1:500 - 1:2,000 This affinity purified antibody has been tested for use in ELISA, IHC, and by western blot. Specific conditions for reactivity should be optimized by the end user. Expect a band approximately 43 kDa in size corresponding to LDB2 by western blotting in the appropriate cell lysate or extract.

## Anti-LIM domain-binding protein 2 LDB2 Antibody (A09871) Images



Boster's Affinity Purified anti-LDB2 (Clim1) antibody was used at a 5  $\mu\text{g/ml}$  to detect LDB2 in human brain cortex tissue. The image shows the localization of antibody as the precipitated red signal, with a hematoxylin purple nuclear counter stain. Tissue was formalin-fixed and paraffin embedded.



Western blot using Boster's Affinity Purified anti-LDB2 antibody shows detection of a 43-kDa band corresponding to LDB2 in a lysates prepared from human kidney (lane 1) and mouse spleen (lane 2) tissues. Approximately 18  $\mu\text{g}$  of lysate was run on a SDS-PAGE and transferred onto nitrocellulose followed by reaction with a 1:500 dilution of anti-LDB2 antibody. Detection occurred using a 1:5,000 dilution of HRP-labeled Goat anti-Rabbit IgG for 1 hour at room temperature. A chemiluminescence system was used for signal detection (Roche) using a 1 min exposure time.

### Submit a product review to Biocompare.com

Submit a review of this product to Biocompare.com to receive a \$20 Amazon.com giftcard! Your reviews help your fellow scientists make the right decisions. Thank you for your contribution.



Anti-LIM domain-binding protein 2 LDB2 Antibody

For Research Use Only. Not for use in diagnostic procedures.