

Anti-Nuclear protein MDM1 MDM1 Antibody

Catalog Number: A09897

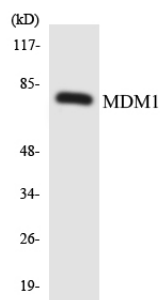
Overview

| | |
|----------------------|---|
| Product Name | Anti-Nuclear protein MDM1 MDM1 Antibody |
| Reactive Species | Human, Mouse, Rat |
| Description | Boster Bio Anti-Nuclear protein MDM1 MDM1 Antibody catalog # A09897. Tested in WB, ELISA applications. This antibody reacts with Human, Mouse, Rat. |
| Application | ELISA, WB |
| Clonality | Polyclonal |
| Formulation | Liquid in PBS containing 50% glycerol, 0.5% stabilizing protein and 0.02% sodium azide. This antibody is supplied in a stabilized formulation. Compatibility with conjugation reactions depends on the chemistry of the conjugation method used. For conjugation methods that are not compatible with the stabilizing components present in this formulation, a carrier-free antibody format is required. |
| Storage Instructions | Store at -20°C for one year. For short term storage and frequent use, store at 4°C for up to one month. Avoid repeated freeze-thaw cycles. |
| Host | Rabbit |
| Uniprot ID | Q8TC05 |

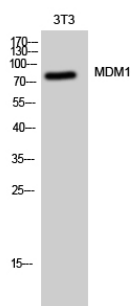
Technical Details

| | |
|---------------------|--|
| Immunogen | The antiserum was produced against synthesized peptide derived from human MDM1. AA range:665-714 |
| Isotype | IgG |
| Form | Liquid |
| Concentration | 1 mg/ml |
| Purification | Immunogen affinity purified |
| Suggested Dilutions | WB 1:500-1:2000 ELISA 1:5000 |

Anti-Nuclear protein MDM1 MDM1 Antibody (A09897) Images



Western blot analysis of the lysates from HepG2 cells using MDM1 antibody.



Western Blot analysis of 3T3 cells using MDM1 Polyclonal Antibody cells nucleus extracted by Minute TM Cytoplasmic and Nuclear Fractionation kit .

Submit a product review to [Biocompare.com](https://www.biocompare.com)

Submit a review of this product to [Biocompare.com](https://www.biocompare.com) to receive a \$20 Amazon.com giftcard! Your reviews help your fellow scientists make the right decisions. Thank you for your contribution.



Anti-Nuclear protein MDM1 MDM1 Antibody

For Research Use Only. Not for use in diagnostic procedures.