

Anti-Mitochondria-eating protein SPATA18 Antibody

Catalog Number: A09906

About SPATA18

SPATA18, also known as SPETEX-1, was initially identified as a cytoplasmic protein of elongate spermatids that is thought to be involved in differentiation process of elongate spermatids to mature spermatozoa. Recent experiments have shown that SPATA18 is a transcriptional target of p53 and p63. It has also been suggested to play a role in mitochondria quality control by inducing intramitochondrial lysosome-like organelle that eliminate oxidized mitochondrial proteins.

Overview

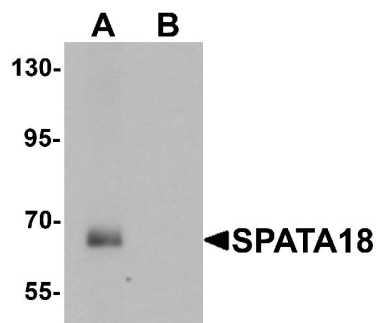
Product Name	Anti-Mitochondria-eating protein SPATA18 Antibody
Reactive Species	Human, Mouse, Rat
Description	Boster Bio Anti-Mitochondria-eating protein SPATA18 Antibody (Catalog # A09906). Tested in ELISA, WB applications. This antibody reacts with Human, Mouse, Rat.
Application	ELISA, WB
Clonality	Polyclonal
Formulation	SPATA18 Antibody is supplied in PBS containing 0.02% sodium azide.
Storage Instructions	SPATA18 antibody can be stored at 4°C for three months and -20°C, stable for up to one year. Avoid repeated freeze-thaw cycles. Antibodies should not be exposed to prolonged high temperatures.
Host	Chicken
Uniprot ID	Q8TC71

Technical Details

Immunogen	SPATA18 antibody was raised against a 19 amino acid synthetic peptide near the amino terminus of human SPATA18. The immunogen is located within amino acids 90 - 140 of SPATA18.
Cross Reactivity	At least three isoforms of SPATA18 are known to exist; this antibody will detect the two longest isoforms. SPATA18 antibody is predicted to not cross-react with other SPATA family members.
Isotype	IgY
Form	Liquid
Concentration	1 mg/mL
Purification	SPATA18 Antibody is affinity chromatography purified via peptide column.
Suggested Dilutions	Dilute the sample so that the expected range of concentrations fall within the detection range of this kit.

If the expected range of concentration is unknown, a pilot test should be conducted to decide the optimal dilution ratio for your samples.
Some PubMed article(s) citing the expression level of this target are as follows:
Boster Bio's internal QC testing used:
SPATA18 antibody can be used for detection of SPATA18 by Western blot at 1 ug/mL.
Antibody validated: Western Blot in rat samples. All other applications and species not yet tested.
Optimal dilutions for each application should be determined by the researcher.

Anti-Mitochondria-eating protein SPATA18 Antibody (A09906) Images



Submit a product review to Biocompare.com

Submit a review of this product to Biocompare.com to receive a \$20 Amazon.com giftcard! Your reviews help your fellow scientists make the right decisions. Thank you for your contribution.



Anti-Mitochondria-eating protein SPATA18 Antibody