

Anti-GRB2-related adapter protein Grap Antibody

Catalog Number: A09913

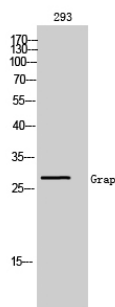
Overview

Product Name	Anti-GRB2-related adapter protein Grap Antibody
Reactive Species	Human, Mouse, Rat
Description	Boster Bio Anti-GRB2-related adapter protein Grap Antibody catalog # A09913. Tested in ELISA, IHC, WB applications. This antibody reacts with Human, Mouse, Rat.
Application	ELISA, IF, IHC, WB
Clonality	Polyclonal
Formulation	Liquid in PBS containing 50% glycerol, 0.5% stabilizing protein and 0.02% sodium azide. This antibody is supplied in a stabilized formulation. Compatibility with conjugation reactions depends on the chemistry of the conjugation method used. For conjugation methods that are not compatible with the stabilizing components present in this formulation, a carrier-free antibody format is required.
Storage Instructions	Store at -20°C for one year. For short term storage and frequent use, store at 4°C for up to one month. Avoid repeated freeze-thaw cycles.
Host	Rabbit
Uniprot ID	Q13588

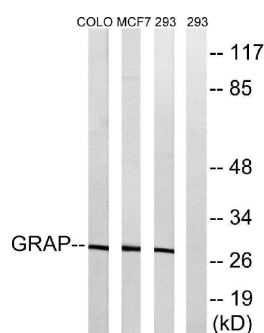
Technical Details

Immunogen	The antiserum was produced against synthesized peptide derived from human GRAP. AA range:1-50
Isotype	IgG
Form	Liquid
Concentration	1 mg/ml
Purification	The antibody was affinity-purified from rabbit antiserum by affinity-chromatography using epitope-specific immunogen.
Suggested Dilutions	WB 1:500-1:2000 IHC 1:100-1:300 ELISA 1:20000 IF 1:50-200

Anti-GRB2-related adapter protein Grap Antibody (A09913) Images



Western Blot analysis of 293 cells using Grap Polyclonal Antibody



Western blot analysis of lysates from 293, MCF-7, COLO cells, using GRAP Antibody. The lane on the right is blocked with the synthesized peptide.

Submit a product review to Biocompare.com

Submit a review of this product to Biocompare.com to receive a \$20 Amazon.com giftcard! Your reviews help your fellow scientists make the right decisions. Thank you for your contribution.



Anti-GRB2-related adapter protein Grap Antibody

For Research Use Only. Not for use in diagnostic procedures.