

## Anti-GRB2-related adapter protein Grap Antibody

Catalog Number: A09913-1

### About GRAP

Cybr (Pscdbp) is a new scaffold protein with significant homology to Tamalin. It contains a PDZ binding domain and a coiled-coil domain. Cybr is highly expressed in the immune system, and its expression seems to be common to nearly all immune cell populations (T cells, B cells, NK Macrophages, dendritic cells). Other organs/tissues in which Cybr is expressed include lung, kidney, intestine and testes. Cybr may play an important in vivo role in cell migration, especially when modulated by pro-inflammatory cytokines. Anti-Cybr Antibody is suitable for researchers interested in the Research Areas of Chromatin, Immunology, Neuroscience, and Signal Transduction.

### Overview

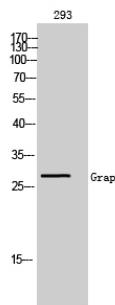
Product Name	Anti-GRB2-related adapter protein Grap Antibody
Reactive Species	Human, Mouse, Rat
Description	Boster Bio Anti-GRB2-related adapter protein Grap Antibody catalog # A09913-1. Tested in WB applications. This antibody reacts with Human, Mouse, Rat.
Application	WB
Clonality	Polyclonal 2F1
Formulation	Liquid in PBS containing 50% glycerol, 0.5% BSA and 0.02% sodium azide.
Storage Instructions	Store at -20°C for one year. For short term storage and frequent use, store at 4°C for up to one month. Avoid repeated freeze-thaw cycles.
Host	Rabbit
Uniprot ID	Q13588

### Technical Details

Immunogen	Synthesized peptide derived from the N-terminal region of human Grap. at AA range: 10-90
Predicted Reactive Species	Canine, Equine, Guinea Pig
Isotype	IgG
Form	Liquid
Concentration	This antibody's concentration is >0.5mg/ml.
Purification	Immunogen affinity purified
Suggested Dilutions	Dilute the sample so that the expected range of concentrations fall within the detection range of this kit. If the expected range of concentration is unknown, a pilot test should be conducted to decide the

optimal dilution ratio for your samples.  
Some PubMed article(s) citing the expression level of this target are as follows:  
Boster Bio's internal QC testing used:  
WB, 1:500-1:2000

## Anti-GRB2-related adapter protein Grap Antibody (A09913-1) Images



Western Blot (WB) analysis of 293 cells using Grap Polyclonal antibody.

### Submit a product review to Biocompare.com

Submit a review of this product to Biocompare.com to receive a \$20 Amazon.com giftcard! Your reviews help your fellow scientists make the right decisions. Thank you for your contribution.



Anti-GRB2-related adapter protein Grap Antibody