

Anti-Rim2 RIMS2 Antibody

Catalog Number: A09915-1

About RIMS2

Rab3-interacting molecules (RIMs) are synaptic proteins necessary for neuronal transmission and plasticity. Rim1 and Rim2 proteins are expressed in overlapping but distinct patterns throughout the brain. While the ablation of either gene was not lethal in mice, the deletion of both resulted in postnatal mortality. This lethality is due to a defect in neurotransmitter release; synapses without RIM proteins can still release neurotransmitters but are unable to do so in response to normal Ca²⁺ triggers. Like Rim1, Rim 2 is thought to be an effector protein for Rab3, binding to Rab3 on synaptic vesicles in a GTP-dependent manner.

Overview

Product Name	Anti-Rim2 RIMS2 Antibody
Reactive Species	Human, Mouse, Rat
Description	Boster Bio Anti-Rim2 RIMS2 Antibody (Catalog # A09915-1). Tested in ELISA, WB, IHC-P, IF applications. This antibody reacts with Human, Mouse, Rat.
Application	ELISA, IF, IHC-P, WB
Clonality	Polyclonal
Formulation	Rim2 Antibody is supplied in PBS containing 0.02% sodium azide.
Storage Instructions	Rim2 antibody can be stored at 4°C for three months and -20°C, stable for up to one year. Avoid repeated freeze-thaw cycles. Antibodies should not be exposed to prolonged high temperatures.
Host	Rabbit
Uniprot ID	Q9UQ26

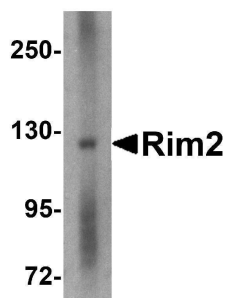
Technical Details

Immunogen	Rim2 antibody was raised against a 17 amino acid synthetic peptide near the center of the human Rim2. The immunogen is located within amino acids 250 - 300 of Rim2.
Predicted Reactive Species	Mouse, Rat
Cross Reactivity	Multiple isoforms of RIM2 are known to exist. This antibody is predicted to have no cross-reactivity to other Rim proteins.
Isotype	IgG
Form	Liquid
Concentration	1 mg/mL
Purification	Rim2 Antibody is affinity chromatography purified via peptide column.

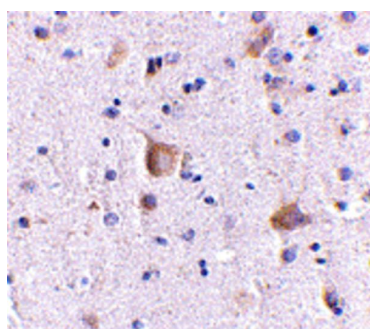
Suggested Dilutions

Rim2 antibody can be used for detection of Rim2 by Western blot at 1 ug/mL. Antibody can also be used for immunohistochemistry starting at 5 ug/mL. For immunofluorescence start at 20 ug/mL. Antibody validated: Western Blot in human samples; Immunohistochemistry in human samples and Immunofluorescence in human samples. All other applications and species not yet tested. Optimal dilutions for each application should be determined by the researcher.

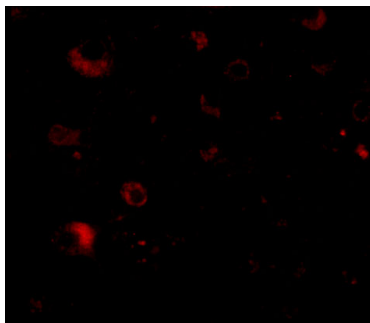
Anti-Rim2 RIMS2 Antibody (A09915-1) Images



Western blot analysis of Rim2 in human brain tissue lysate with Rim2 antibody at 1 ug/mL.



Immunohistochemistry of Rim2 in human brain with Rim2 antibody at 5 ug/mL.



Immunofluorescence of Rim2 in Human Brain tissue with Rim2 antibody at 20 ug/mL.

Submit a product review to [Biocompare.com](https://www.biocompare.com)

Submit a review of this product to [Biocompare.com](https://www.biocompare.com) to receive a \$20 Amazon.com giftcard! Your reviews help your fellow scientists make the right decisions. Thank you for your contribution.



Anti-Rim2 RIMS2 Antibody

For Research Use Only. Not for use in diagnostic procedures.