

Anti-CLC10 CLEC10A Antibody

Catalog Number: A09933-1

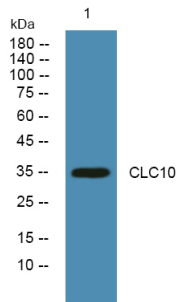
Overview

Product Name	Anti-CLC10 CLEC10A Antibody
Reactive Species	Human, Mouse, Rat
Description	Boster Bio Anti-CLC10 CLEC10A Antibody catalog # A09933-1. Tested in WB, IF, ELISA applications. This antibody reacts with Human, Mouse, Rat.
Application	ELISA, IF, WB
Clonality	Polyclonal
Formulation	Liquid form in PBS containing 50% glycerol, and 0.02% sodium azide.
Storage Instructions	Store at -20°C for one year. For short term storage and frequent use, store at 4°C for up to one month. Avoid repeated freeze-thaw cycles.
Host	Rabbit
Uniprot ID	Q8IUN9

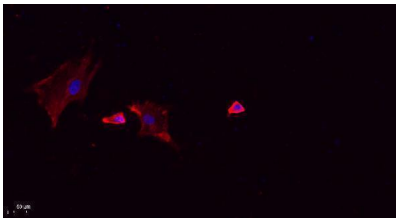
Technical Details

Immunogen	Synthesized peptide derived from part region of human protein AA range: 191-240
Isotype	IgG
Form	Liquid
Concentration	1 mg/ml
Purification	CLC10 antibody was affinity-purified from rabbit antiserum by affinity-chromatography using epitope-specific immunogen.
Suggested Dilutions	WB 1:500-2000 IF 1:100-300 ELISA 1:5000-20000

Anti-CLC10 CLEC10A Antibody (A09933-1) Images



Western blot analysis of lysates from KB cells, primary antibody was diluted at 1:1000, 4°over night



Immunofluorescence analysis of A549. 1, primary Antibody (red) was diluted at 1:200 (4°C overnight). 2, Goat Anti Rabbit IgG (H&L) - Alexa Fluor 594 Secondary antibody was diluted at 1:1000 (room temperature, 50min).3, Picture B: DAPI (blue) 10min.

Submit a product review to [Biocompare.com](https://www.biocompare.com)

Submit a review of this product to [Biocompare.com](https://www.biocompare.com) to receive a \$20 Amazon.com giftcard! Your reviews help your fellow scientists make the right decisions. Thank you for your contribution.



Anti-CLC10 CLEC10A Antibody

For Research Use Only. Not for use in diagnostic procedures.