

## Anti-DDX60 Antibody

Catalog Number: A09938

### About DDX60

DDX60 is a DEXD/H Box RNA helicase and the human homolog of the *S. cerevisiae* Ski2, a cofactor of RNA exosome. Expression of DDX60 increases after viral infection and binds to endogenous RIG-I, a cytoplasmic viral RNA sensor, as well as other RIG-I-like receptors such as MDA5 and LGP2. These proteins activate TBK1 and IKK-e, signaling IRF3 and NF- $\kappa$ B-responsive genes in the innate immune response pathway. DDX60 is required for the RIG-I- or MDA5-dependent response to viral infection, but is dispensable for TLR3-mediated signaling.

### Overview

Product Name	Anti-DDX60 Antibody
Reactive Species	Human, Mouse, Rat
Description	Boster Bio Anti-DDX60 Antibody (Catalog # A09938). Tested in ELISA, WB, IF applications. This antibody reacts with Human, Mouse, Rat.
Application	ELISA, IF, WB
Clonality	Polyclonal
Formulation	DDX60 Antibody is supplied in PBS containing 0.02% sodium azide.
Storage Instructions	DDX60 antibody can be stored at 4°C for three months and -20°C, stable for up to one year. Avoid repeated freeze-thaw cycles. Antibodies should not be exposed to prolonged high temperatures.
Host	Rabbit
Uniprot ID	Q8IY21

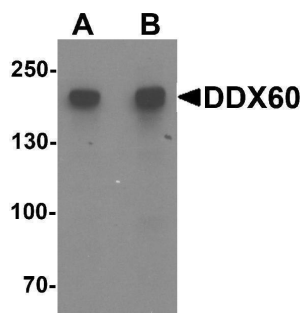
### Technical Details

Immunogen	DDX60 antibody was raised against a 17 amino acid synthetic peptide near the center of human DDX60. The immunogen is located within amino acids 1140 - 1190 of DDX60.
Predicted Reactive Species	Bovine, Mouse
Cross Reactivity	At least three isoforms of DDX60 are known to exist; this antibody will detect all three isoforms.
Isotype	IgG
Form	Liquid
Concentration	1 mg/mL
Purification	DDX60 Antibody is affinity chromatography purified via peptide column.
Suggested Dilutions	DDX60 antibody can be used for detection of DDX60 by Western blot at 1 - 2 ug/mL. For

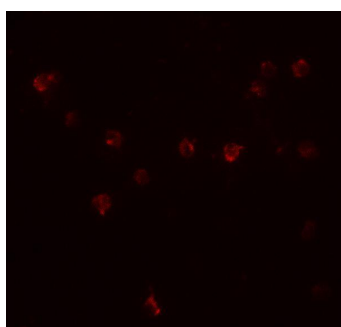
immunofluorescence start at 20 ug/mL.

Antibody validated: Western Blot in mouse samples and Immunofluorescence in mouse samples. All other applications and species not yet tested. Optimal dilutions for each application should be determined by the researcher.

## Anti-DDX60 Antibody (A09938) Images



Western blot analysis of DDX60 in A20 cell lysate with DDX60 antibody at (A) 1 and (B) 2 ug/mL.



Immunofluorescence of DDX60 in A20 cells with DDX60 antibody at 20 ug/mL.

### Submit a product review to [Biocompare.com](https://www.biocompare.com)

Submit a review of this product to [Biocompare.com](https://www.biocompare.com) to receive a \$20 Amazon.com giftcard! Your reviews help your fellow scientists make the right decisions. Thank you for your contribution.



Anti-DDX60 Antibody

For Research Use Only. Not for use in diagnostic procedures.