

Anti-TMEM38B Antibody

Catalog Number: A09944

About TMEM38B

TMEM38A and TMEM38B are two recently identified trimeric intracellular cation (TRIC) channel subtypes. TMEM38B is expressed in most mammalian tissues, while TMEM38A is preferentially expressed in excitable tissues such as striated muscle and brain. Mice deficient in both TMEM38A and TMEM38B suffer embryonic cardiac failure; the cardiac myocytes display severe dysfunction in SR Ca²⁺ handling, weakened Ca²⁺ release, and reduced K⁺ permeability indicating that the TRIC cation channels are likely to act as counter-ion channels that function in synchronization with Ca²⁺ release from intracellular stores. Mice that were lacking only TMEM38B however, die shortly after birth due to respiratory failure and have lungs exhibiting severe histological defect and ultrastructural abnormalities in their alveolar type II epithelial cells, indicating that TMEM38B are essential for perinatal lung maturation. Other experiments have shown that TMEM38A and TMEM38B can act with junctophilin proteins to support efficient ryanodine receptor-mediated Ca²⁺ release in muscle cells.

Overview

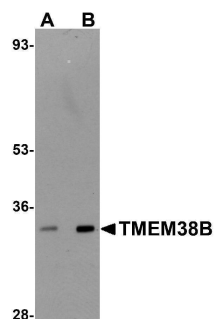
Product Name	Anti-TMEM38B Antibody
Reactive Species	Human, Mouse, Rat
Description	Boster Bio Anti-TMEM38B Antibody (Catalog # A09944). Tested in ELISA, WB, IHC-P, IF applications. This antibody reacts with Human, Mouse, Rat.
Application	ELISA, IF, IHC-P, WB
Clonality	Polyclonal
Formulation	TMEM38B Antibody is supplied in PBS containing 0.02% sodium azide.
Storage Instructions	TMEM38B antibody can be stored at 4°C for three months and -20°C, stable for up to one year. Avoid repeated freeze-thaw cycles. Antibodies should not be exposed to prolonged high temperatures.
Host	Rabbit
Uniprot ID	Q9NVV0

Technical Details

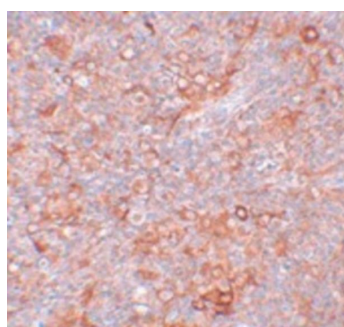
Immunogen	TMEM38B antibody was raised against a 17 amino acid synthetic peptide from near the carboxy terminus of human TMEM38B. The immunogen is located within the last 50 amino acids of TMEM38B.
Predicted Reactive Species	Bovine, Chicken
Isotype	IgG
Form	Liquid

Concentration	1 mg/mL
Purification	TMEM38B Antibody is affinity chromatography purified via peptide column.
Suggested Dilutions	TMEM38B antibody can be used for detection of TMEM38B by Western blot at 1 - 2 ug/mL. Antibody can also be used for immunohistochemistry starting at 5 ug/mL. For immunofluorescence start at 20 ug/mL. Antibody validated: Western Blot in rat samples; Immunohistochemistry in mouse samples and Immunofluorescence in mouse samples. All other applications and species not yet tested. Optimal dilutions for each application should be determined by the researcher.

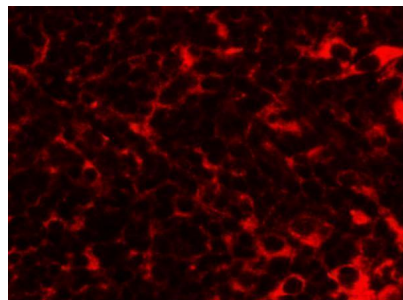
Anti-TMEM38B Antibody (A09944) Images



Western blot analysis of TMEM38B in rat thymus tissue lysate with TMEM38B antibody at (A) 1 and (B) 2 ug/mL.



Immunohistochemistry of TMEM38B in mouse thymus tissue with TMEM38B antibody at 5 ug/mL.



Immunofluorescence of TMEM38B in mouse thymus tissue with TMEM38B antibody at 20 ug/mL.

Submit a product review to [Biocompare.com](https://www.biocompare.com)

Submit a review of this product to [Biocompare.com](https://www.biocompare.com) to receive a \$20 Amazon.com giftcard! Your reviews help your fellow scientists make the right decisions. Thank you for your contribution.



Anti-TMEM38B Antibody

For Research Use Only. Not for use in diagnostic procedures.