

## Anti-RRP8 Antibody Picoband®

Catalog Number: A09950-2

### About RRP8

Ribosomal RNA-processing protein 8 is a protein that in humans is encoded by the RRP8 gene. Enables methylated histone binding activity. Involved in several processes, including cellular response to glucose starvation; intrinsic apoptotic signaling pathway by p53 class mediator; and regulation of gene expression. Located in several cellular components, including cytosol; nuclear lumen; and rDNA heterochromatin. Part of chromatin silencing complex.

### Overview

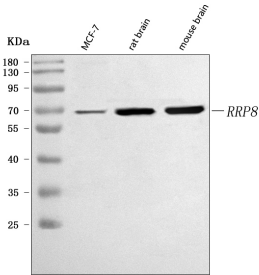
|                      |  |
|----------------------|--|
| Product Name         | Anti-RRP8 Antibody Picoband®   |
| Reactive Species     | Human, Mouse, Rat  |
| Description          | Boster Bio Anti-RRP8 Antibody Picoband® catalog # A09950-2. Tested in ELISA, Flow Cytometry, IF, ICC, IHC, WB applications. This antibody reacts with Human, Mouse, Rat. The brand Picoband indicates this is a premium antibody that guarantees superior quality, high affinity, and strong signals with minimal background in Western blot applications. Only our best-performing antibodies are designated as Picoband, ensuring unmatched performance. |
| Application          | ELISA, Flow Cytometry, IF, IHC, ICC, WB  |
| Clonality            | Polyclonal   |
| Formulation          | Each vial contains 4 mg Trehalose, 0.9 mg NaCl, 0.2 mg Na <sub>2</sub> HPO <sub>4</sub> .  |
| Storage Instructions | At -20°C for one year from date of receipt. After reconstitution, at 4°C for one month. It can also be aliquotted and stored frozen at -20°C for six months. Avoid repeated freezing and thawing.  |
| Host                 | Rabbit   |
| Uniprot ID           | O43159   |

### Technical Details

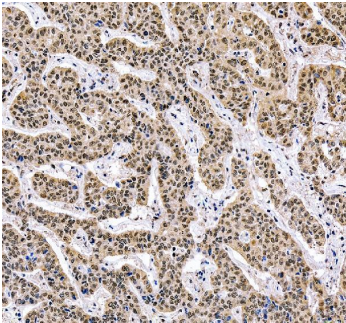
|                               |   |
|-------------------------------|---|
| Immunogen                     | E.coli-derived human RRP8 recombinant protein (Position: K199-R456).  |
| Recommended Detection Systems | Boster recommends Enhanced Chemiluminescent Kit with anti-Rabbit IgG (EK1002) for Western blot, and HRP Conjugated anti-Rabbit IgG Super Vision Assay Kit (SV0002-1) for and ICC. |
| Cross Reactivity              | No cross-reactivity with other proteins.  |
| Isotype                       | Rabbit IgG  |
| Form                          | Lyophilized   |
| Concentration                 | Adding 0.2 ml of distilled water will yield a concentration of 500 µg/ml.   |

|                     |  |
|---------------------|--|
| Purification        | Immunogen affinity purified.   |
| Suggested Dilutions | Western blot, 0.25-0.5 ug/ml, Human, Mouse, Rat<br>Immunohistochemistry(Paraffin-embedded Section), 2-5 ug/ml, Human<br>Immunocytochemistry/Immunofluorescence, 5 ug/ml, Human<br>Flow Cytometry (Fixed), 1-3 ug/1x10 <sup>6</sup> cells, Human<br>ELISA, 0.1-0.5 ug/ml, - |

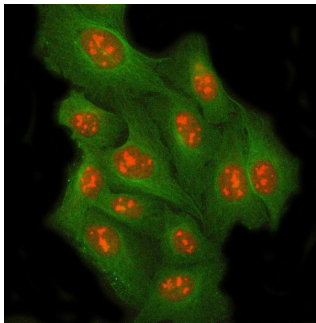
## Anti-RRP8 Antibody Picoband® (A09950-2) Images



Western blot analysis of RRP8 using anti-RRP8 antibody (A09950-2). Electrophoresis was performed on a 5-20% SDS-PAGE gel at 70V (Stacking gel) / 90V (Resolving gel) for 2-3 hours. The sample well of each lane was loaded with 30 ug of sample under reducing conditions. Lane 1: human MCF-7 whole cell lysates, Lane 2: rat brain tissue lysates, Lane 3: mouse brain tissue lysates. After electrophoresis, proteins were transferred to a nitrocellulose membrane at 150 mA for 50-90 minutes. Blocked the membrane with 5% non-fat milk/TBS for 1.5 hour at RT. The membrane was incubated with rabbit anti-RRP8 antigen affinity purified polyclonal antibody (Catalog # A09950-2) at 0.5 ug/mL overnight at 4°C, then washed with TBS-0.1%Tween 3 times with 5 minutes each and probed with a goat anti-rabbit IgG-HRP secondary antibody at a dilution of 1:5000 for 1.5 hour at RT. The signal is developed using an Enhanced Chemiluminescent detection (ECL) kit (Catalog # EK1002) with Tanon 5200 system. A specific band was detected for RRP8 at approximately 65 kDa. The expected band size for RRP8 is at 51 kDa.

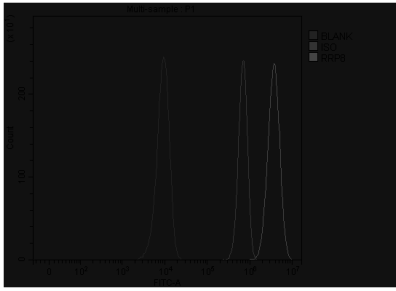


IHC analysis of RRP8 using anti-RRP8 antibody (A09950-2). RRP8 was detected in a paraffin-embedded section of human liver tissue. Heat mediated antigen retrieval was performed in EDTA buffer (pH 8.0, epitope retrieval solution). The tissue section was blocked with 10% goat serum. The tissue section was then incubated with 2 ug/ml rabbit anti-RRP8 Antibody (A09950-2) overnight at 4°C. Peroxidase Conjugated Goat Anti-rabbit IgG was used as secondary antibody and incubated for 30 minutes at 37°C. The tissue section was developed using HRP Conjugated Rabbit IgG Super Vision Assay Kit (Catalog # SV0002) with DAB as the chromogen.



IF analysis of RRP8 and Tubulin beta using anti-RRP8 antibody (A09950-2) and anti-Tubulin beta antibody (M05613-4). RRP8 and Tubulin beta was detected in an immunocytochemical section of U2OS cells. Enzyme antigen retrieval was performed using IHC enzyme antigen retrieval reagent (AR0022) for 15 mins. The cells were blocked with 10% goat serum. And then incubated with 5 ug/mL rabbit anti-RRP8 Antibody (A09950-2) and mouse anti-Tubulin beta Antibody (M05613-4) overnight at 4°C. Cy3 Conjugated Goat Anti-Rabbit IgG (BA1032) and DyLight®488 Conjugated Goat Anti-Mouse IgG (BA1126) were used as secondary antibody at 1:500 dilution and incubated for 30 minutes at 37°C. Visualize using a fluorescence microscope and filter sets appropriate for the label used.

Flow Cytometry analysis of HeLa cells using anti-RRP8 antibody (A09950-2). Overlay histogram showing HeLa cells stained with A09950-2 (Blue line). To facilitate intracellular



staining, cells were fixed with 4% paraformaldehyde and permeabilized with permeabilization buffer. The cells were blocked with 10% normal goat serum. And then incubated with rabbit anti-RRP8 Antibody (A09950-2, 1 ug/1x10<sup>6</sup> cells) for 30 min at 20°C. DyLight®488 conjugated goat anti-rabbit IgG (BA1127, 5-10 ug/1x10<sup>6</sup> cells) was used as secondary antibody for 30 minutes at 20°C. Isotype control antibody (Green line) was rabbit IgG (1 ug/1x10<sup>6</sup>) used under the same conditions. Unlabelled sample without incubation with primary antibody and secondary antibody (Red line) was used as a blank control.

## Submit a product review to [Biocompare.com](https://www.biocompare.com)

Submit a review of this product to [Biocompare.com](https://www.biocompare.com) to receive a \$20 Amazon.com giftcard! Your reviews help your fellow scientists make the right decisions. Thank you for your contribution.



### Anti-RRP8 Antibody

For Research Use Only. Not for use in diagnostic procedures.