

Anti-Secernin-1 SCRIN1 Antibody

Catalog Number: A10002

About SCRIN1

SCRIN1 was first identified as a cytosolic protein that is involved in the regulation of exocytosis from peritoneal mast cells. More recent studies have shown that SCRIN1 expression is upregulated in gastric cancer cell lines and may possess epitopes that could function as tumor-associated antigens, potentially providing targets for cancer vaccines in the treatment of gastric cancers. Another report indicates that decreased expression of SCRIN1 via RNAi expression resulted in significantly lower rates of cell growth in colorectal cancer cell lines, and increased SCRIN1 expression in patients with colorectal cancer correlated with poor prognosis, suggesting that SCRIN1 may also be involved in the regulation of cell growth and might be useful as a prognostic tool.

Overview

Product Name	Anti-Secernin-1 SCRIN1 Antibody
Reactive Species	Human, Mouse, Rat
Description	Boster Bio Anti-Secernin-1 SCRIN1 Antibody (Catalog # A10002). Tested in ELISA, WB, IHC-P, IF applications. This antibody reacts with Human, Mouse, Rat.
Application	ELISA, IF, IHC-P, WB
Clonality	Polyclonal
Formulation	SCRIN1 Antibody is supplied in PBS containing 0.02% sodium azide.
Storage Instructions	SCRIN1 antibody can be stored at 4°C for three months and -20°C, stable for up to one year. Avoid repeated freeze-thaw cycles. Antibodies should not be exposed to prolonged high temperatures.
Host	Rabbit
Uniprot ID	Q12765

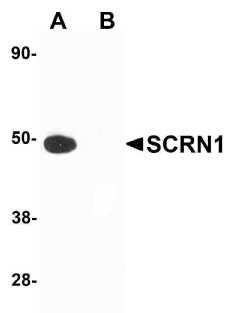
Technical Details

Immunogen	SCRIN1 antibody was raised against a 20 amino acid synthetic peptide near the carboxy terminus of human SCRIN1. The immunogen is located within amino acids 320 - 370 of SCRIN1.
Predicted Reactive Species	Bovine
Isotype	IgG
Form	Liquid
Concentration	1 mg/mL
Purification	SCRIN1 Antibody is affinity chromatography purified via peptide column.

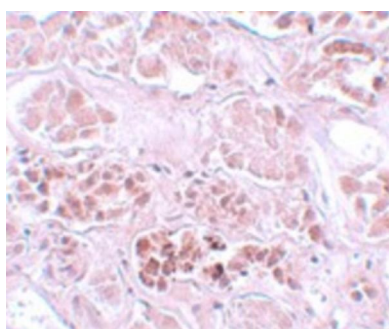
Suggested Dilutions

SCRN1 antibody can be used for detection of SCRN1 by Western blot at 1 ug/mL. Antibody can also be used for immunohistochemistry starting at 5 ug/mL. For immunofluorescence start at 20 ug/mL. Antibody validated: Western Blot in human samples; Immunohistochemistry in human samples and Immunofluorescence in human samples. All other applications and species not yet tested. Optimal dilutions for each application should be determined by the researcher.

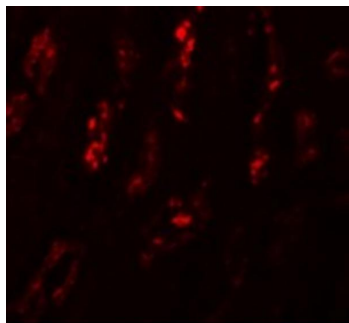
Anti-Secernin-1 SCR1 Antibody (A10002) Images



Western blot analysis of SCR1 in human kidney tissue lysate with SCR1 antibody at 1 ug/mL in (A) the absence and (B) the presence of blocking peptide.



Immunohistochemistry of SCR1 in human kidney tissue with SCR1 antibody at 5 ug/mL.



Immunofluorescence of SCR1 in Human Kidney cells with SCR1 antibody at 20 ug/mL.

Submit a product review to [Biocompare.com](https://www.biocompare.com)

Submit a review of this product to [Biocompare.com](https://www.biocompare.com) to receive a \$20 Amazon.com giftcard! Your reviews help your fellow scientists make the right decisions. Thank you for your contribution.



Anti-Secernin-1 SCR1 Antibody

For Research Use Only. Not for use in diagnostic procedures.