

## Anti-Casein Kinase I gamma2 CSNK1G2 Antibody

Catalog Number: A10048

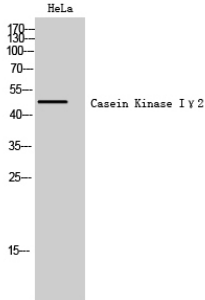
### Overview

|                      |   |
|----------------------|---|
| Product Name         | Anti-Casein Kinase I gamma2 CSNK1G2 Antibody  |
| Reactive Species     | Human, Mouse, Rat   |
| Description          | Boster Bio Anti-Casein Kinase I gamma2 CSNK1G2 Antibody catalog # A10048. Tested in WB, IHC, IF, ELISA applications. This antibody reacts with Human, Mouse, Rat.   |
| Application          | ELISA, IF, IHC, WB  |
| Clonality            | Polyclonal  |
| Formulation          | Liquid in PBS containing 50% glycerol, 0.5% stabilizing protein and 0.02% sodium azide. This antibody is supplied in a stabilized formulation. Compatibility with conjugation reactions depends on the chemistry of the conjugation method used. For conjugation methods that are not compatible with the stabilizing components present in this formulation, a carrier-free antibody format is required. |
| Storage Instructions | Store at -20°C for one year. For short term storage and frequent use, store at 4°C for up to one month. Avoid repeated freeze-thaw cycles.  |
| Host                 | Rabbit  |
| Uniprot ID           | P78368  |

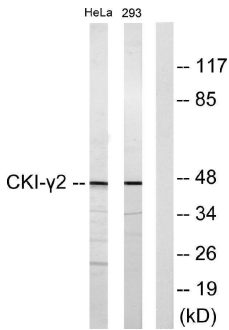
### Technical Details

|                     |  |
|---------------------|--|
| Immunogen           | The antiserum was produced against synthesized peptide derived from human CKI-gamma2. AA range:10-59 |
| Isotype             | IgG  |
| Form                | Liquid   |
| Concentration       | 1 mg/ml  |
| Purification        | Immunogen affinity purified  |
| Suggested Dilutions | WB 1:500-1:2000<br>IHC 1:100-1:300<br>IF 1:200-1:1000<br>ELISA 1:10000                               |

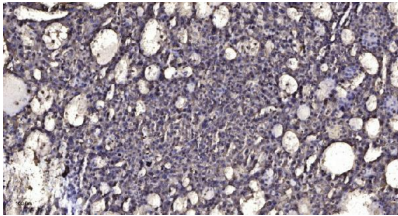
## Anti-Casein Kinase I gamma2 CSNK1G2 Antibody (A10048) Images



Western Blot analysis of HeLa cells using Casein Kinase I gamma2 Polyclonal Antibody



Western blot analysis of lysates from HeLa and 293 cells, using CKI-gamma2 Antibody. The lane on the right is blocked with the synthesized peptide.



Immunohistochemical analysis of paraffin-embedded human liver cancer. 1, Antibody was diluted at 1:200 (4° overnight). 2, Tris-EDTA, pH9.0 was used for antigen retrieval. 3, Secondary antibody was diluted at 1:200 (room temperature, 45min).

### Submit a product review to Biocompare.com

Submit a review of this product to Biocompare.com to receive a \$20 Amazon.com giftcard! Your reviews help your fellow scientists make the right decisions. Thank you for your contribution.



Anti-Casein Kinase I gamma2 CSNK1G2 Antibody

For Research Use Only. Not for use in diagnostic procedures.