

Anti-FEZ2 Antibody

Catalog Number: A10063

About FEZ2

Fasciculation and elongation protein zeta-2 (FEZ2) is a homolog to the mammalian FEZ1, itself an ortholog of the *C. elegans* UNC-76. In contrast to FEZ1, FEZ2 mRNA is widely expressed in mouse tissues. FEZ2 interacts with protein kinase C (PKC)-zeta substrate and induces neurite extension of PC12 cells when co-expressed with a constitutively active form of PKC-zeta, suggesting FEZ2 may play an important role in the morphological changes of various cells by associating with PKC-zeta in a tissue non-specific manner. FEZ2 can interact with FEZ1 through its c-terminal regions and especially its coiled-coil region. At least two isoforms of FEZ2 are known to exist.

Overview

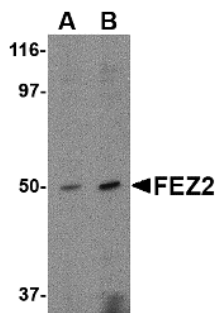
Product Name	Anti-FEZ2 Antibody
Reactive Species	Human, Mouse, Rat
Description	Boster Bio Anti-FEZ2 Antibody (Catalog # A10063). Tested in ELISA, WB, IF applications. This antibody reacts with Human, Mouse, Rat.
Application	ELISA, IF, WB
Clonality	Polyclonal
Formulation	FEZ2 Antibody is supplied in PBS containing 0.02% sodium azide.
Storage Instructions	FEZ2 antibody can be stored at 4°C for three months and -20°C, stable for up to one year. Avoid repeated freeze-thaw cycles. Antibodies should not be exposed to prolonged high temperatures.
Host	Rabbit
Uniprot ID	Q9UHY8

Technical Details

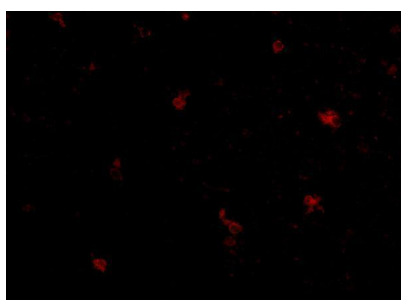
Immunogen	FEZ2 antibody was raised against a 15 amino acid synthetic peptide from near the carboxy terminus of human FEZ2. The immunogen is located within the last 50 amino acids of FEZ2.
Predicted Reactive Species	Bovine
Isotype	IgG
Form	Liquid
Concentration	1 mg/mL
Purification	FEZ2 Antibody is affinity chromatography purified via peptide column.
Suggested Dilutions	FEZ2 antibody can be used for the detection of FEZ2 by Western blot at 0.5 - 1 ug/mL. Antibody can also be used for immunofluorescence starting at 5 ug/mL. For immunofluorescence start at 5 ug/mL.

Antibody validated: Western Blot in mouse samples and Immunofluorescence in human samples. All other applications and species not yet tested. Optimal dilutions for each application should be determined by the researcher.

Anti-FEZ2 Antibody (A10063) Images



Western blot analysis of FEZ2 in mouse brain tissue lysate with FEZ2 antibody at (A) 0.5, and (B) 1 ug/mL.



Immunofluorescence of human brain tissue using FEZ25 antibody at 5 ug/mL.

Submit a product review to [Biocompare.com](https://www.biocompare.com)

Submit a review of this product to [Biocompare.com](https://www.biocompare.com) to receive a \$20 Amazon.com giftcard! Your reviews help your fellow scientists make the right decisions. Thank you for your contribution.



Anti-FEZ2 Antibody

For Research Use Only. Not for use in diagnostic procedures.