

## Anti-ZIP12 SLC39A12 Antibody

Catalog Number: A10066

### About SLC39A12

The zinc transporter ZIP12, also known as SLC39A12, is a member of a family of divalent ion transporters. Zinc is an essential ion for cells and plays significant roles in the growth, development, and differentiation. The zinc transporter family is divided into four subfamilies (I, II, LIV-1 and gufA). ZIP12 is a multipass membrane protein that belongs to the ZIP transporter subfamily LIV-1. Increased levels of ZIP12 have been observed during acute inflammation in the airway and asthma, suggesting that it may be promote increased zinc uptake, as this can reduce inflammation. The zinc content in brains in individuals with schizophrenia is lower than in individuals with other cerebral diseases, and mutations in ZIP12 have been observed in a small group of schizophrenic patients, suggesting that ZIP12 may play a role in this disease.

### Overview

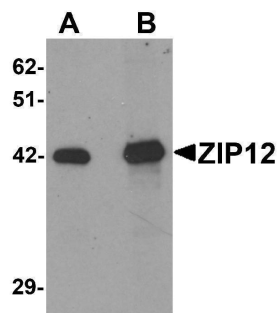
Product Name	Anti-ZIP12 SLC39A12 Antibody
Reactive Species	Human, Mouse
Description	Boster Bio Anti-ZIP12 SLC39A12 Antibody (Catalog # A10066). Tested in ELISA, WB, IHC-P, IF applications. This antibody reacts with Human, Mouse.
Application	ELISA, IF, IHC-P, WB
Clonality	Polyclonal
Formulation	ZIP12 Antibody is supplied in PBS containing 0.02% sodium azide.
Storage Instructions	ZIP12 antibody can be stored at 4°C for three months and -20°C, stable for up to one year. Avoid repeated freeze-thaw cycles. Antibodies should not be exposed to prolonged high temperatures.
Host	Rabbit
Uniprot ID	Q504Y0

### Technical Details

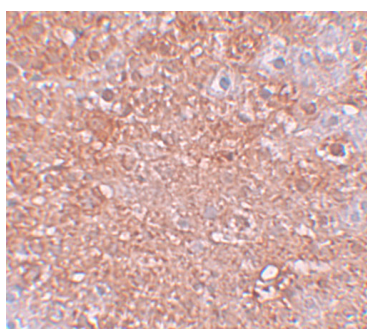
Immunogen	ZIP12 antibody was raised against a 15 amino acid synthetic peptide near the amino terminus of human ZIP12. The immunogen is located within the first 50 amino acids of ZIP12.
Predicted Reactive Species	Bovine
Cross Reactivity	At least four isoforms of ZIP12 are known to exist. ZIP12 antibody is predicted to not cross-react with other ZIP family members.
Isotype	IgG
Form	Liquid
Concentration	1 mg/mL

Purification	ZIP12 Antibody is affinity chromatography purified via peptide column.
Suggested Dilutions	<p>ZIP12 antibody can be used for detection of ZIP12 by Western blot at 0.5 - 1 ug/mL. Antibody can also be used for immunohistochemistry starting at 2.5 ug/mL. For immunofluorescence start at 20 ug/mL.</p> <p>Antibody validated: Western Blot in human samples; Immunohistochemistry in mouse samples and Immunofluorescence in mouse samples. All other applications and species not yet tested. Optimal dilutions for each application should be determined by the researcher.</p>

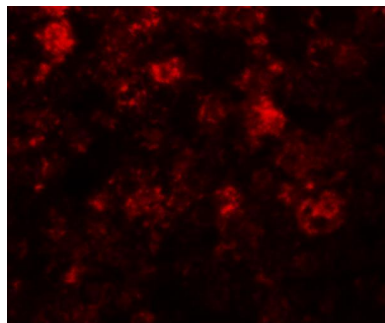
## Anti-ZIP12 SLC39A12 Antibody (A10066) Images



Western blot analysis of ZIP12 in HepG2 cell lysate with ZIP12 antibody at (A) 0.5 and (B) 1 ug/mL.



Immunohistochemistry of ZIP12 in mouse liver tissue with ZIP12 antibody at 2.5 ug/mL.



Immunofluorescence of ZIP12 in mouse liver tissue with ZIP12 antibody at 20 ug/mL.

### Submit a product review to [Biocompare.com](https://www.biocompare.com)

Submit a review of this product to [Biocompare.com](https://www.biocompare.com) to receive a \$20 Amazon.com giftcard! Your reviews help your fellow scientists make the right decisions. Thank you for your contribution.



Anti-ZIP12 SLC39A12 Antibody

For Research Use Only. Not for use in diagnostic procedures.