

Anti-RPS21 Antibody (C-term)

Catalog Number: A10068-1

About RPS21

Essential component of the TIM23 complex, a complex that mediates the translocation of transit peptide-containing proteins across the mitochondrial inner membrane. Has some phosphatase activity in vitro; however such activity may not be relevant in vivo. Isoform 2 may participate in the release of snRNPs and SMN from the Cajal body.

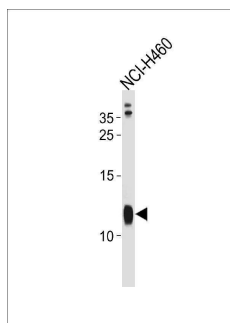
Overview

Product Name	Anti-RPS21 Antibody (C-term)
Reactive Species	Human
Description	Boster Bio Anti-RPS21 Antibody (C-term) (Catalog # A10068-1). Tested in WB application(s). This antibody reacts with Human.
Application	WB
Clonality	Polyclonal
Formulation	Purified polyclonal antibody supplied in PBS with 0.09% (W/V) sodium azide.
Storage Instructions	Maintain refrigerated at 2-8°C for up to 2 weeks. For long-term storage, store at -20°C in small aliquots to prevent freeze-thaw cycles.
Host	Rabbit
Uniprot ID	P63220

Technical Details

Immunogen	This RPS21 antibody is generated from rabbits immunized with a KLH conjugated synthetic peptide between 44-71 amino acids from the C-terminal region of human RPS21.
Predicted Reactive Species	Bovine, Mouse, Pig, Rat
Isotype	Rabbit IgG
Purification	This antibody is purified through a protein A column, followed by peptide affinity purification.
Suggested Dilutions	WB: 1:1000

Anti-RPS21 Antibody (C-term) (A10068-1) Images



RPS21 Antibody (C-term) western blot analysis in NCI-H460 cell line lysates (35ug/lane). This demonstrates the RPS21 antibody detected the RPS21 protein (arrow).

Submit a product review to Biocompare.com

Submit a review of this product to Biocompare.com to receive a \$20 Amazon.com giftcard! Your reviews help your fellow scientists make the right decisions. Thank you for your contribution.



Anti-RPS21 Antibody (C-term)

For Research Use Only. Not for use in diagnostic procedures.