

## Anti-AP1M1 Antibody (Center)

Catalog Number: A10072-1

### About AP1M1

The protein encoded by this gene is the medium chain of the trans-Golgi network clathrin-associated protein complex AP-1. The other components of this complex are beta-prime-adaptin, gamma-adaptin, and the small chain AP1S1. This complex is located at the Golgi vesicle and links clathrin to receptors in coated vesicles. These vesicles are involved in endocytosis and Golgi processing. Alternatively spliced transcript variants encoding distinct protein isoforms have been found for this gene. [provided by RefSeq].

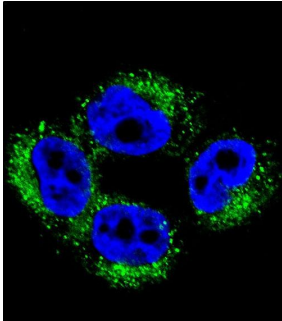
### Overview

Product Name	Anti-AP1M1 Antibody (Center)
Reactive Species	Human, Mouse
Description	Boster Bio Anti-AP1M1 Antibody (Center) (Catalog # A10072-1). Tested in WB, IF, IHC-P, IHC-P-Leica application(s). This antibody reacts with Human, Mouse.
Application	IF, IHC-P, WB, IHC-P-Leica
Clonality	Polyclonal
Formulation	Purified polyclonal antibody supplied in PBS with 0.09% (W/V) sodium azide.
Storage Instructions	Maintain refrigerated at 2-8°C for up to 2 weeks. For long-term storage, store at -20°C in small aliquots to prevent freeze-thaw cycles.
Host	Rabbit
Uniprot ID	Q9BXS5

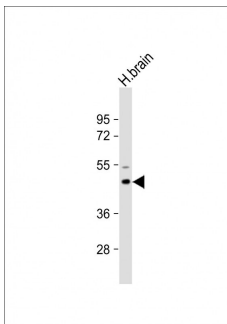
### Technical Details

Immunogen	This AP1M1 antibody is generated from rabbits immunized with a KLH conjugated synthetic peptide between 199-227 amino acids from the Central region of human AP1M1.
Predicted Reactive Species	Bovine, Rat
Isotype	Rabbit IgG
Purification	This antibody is purified through a protein A column, followed by peptide affinity purification.
Suggested Dilutions	IF: 1:10-1:50 WB: 1:1000 IHC-P: 1:10-1:50 IHC-P-Leica: 1:500

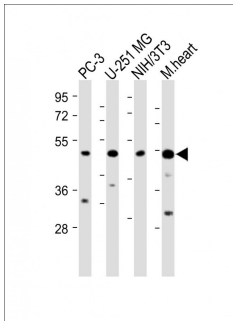
## Anti-AP1M1 Antibody (Center) (A10072-1) Images



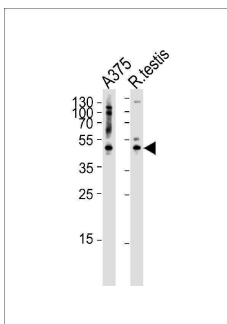
Confocal immunofluorescent analysis of AP1M1 Antibody (Center) with A375 cell followed by Alexa Fluor 488-conjugated goat anti-rabbit IgG (green). DAPI was used to stain the cell nuclear (blue).



Anti-AP1M1 Antibody (Center) at 1:2000 dilution + Human brain lysate  
Lysates/proteins at 20 µg per lane.  
Secondary Goat Anti-Rabbit IgG, (H+L), Peroxidase conjugated at 1/10000 dilution. Predicted band size : 49 kDa  
Blocking/Dilution buffer: 5% NFD/MTBST.

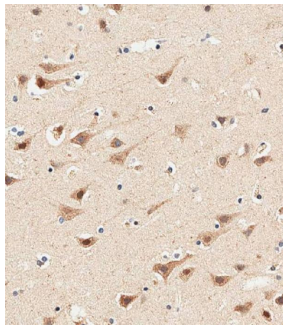
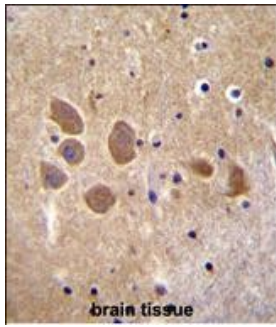


All lanes : Anti-AP1M1 Antibody (Center) at 1:2000 dilution  
Lane 1: PC-3 whole cell lysate  
Lane 2: U-251 MG whole cell lysate  
Lane 3: NIH/3T3 whole cell lysate  
Lane 4: Mouse heart lysate  
Lysates/proteins at 20 µg per lane.  
Secondary Goat Anti-Rabbit IgG, (H+L), Peroxidase conjugated at 1/10000 dilution. Predicted band size : 49 kDa  
Blocking/Dilution buffer: 5% NFD/MTBST.



Western blot analysis of lysates from A375 cell line and rat testis tissue lysate (from left to right), using AP1M1 Antibody (Center). A10072-1 was diluted at 1:1000 at each lane. A goat anti-rabbit IgG H&L (HRP) at 1:5000 dilution was used as the secondary antibody. Lysates at 35 µg per lane.

AP1M1 Antibody (Center) immunohistochemistry analysis in formalin fixed and paraffin embedded human brain tissue followed by peroxidase conjugation of the secondary antibody and DAB staining. This data demonstrates the use of AP1M1 Antibody (Center) for immunohistochemistry. Clinical relevance has not been evaluated.



Immunohistochemical analysis of paraffin-embedded human brain tissue using A10072-1 performed on the Leica® BOND RXm. Samples were incubated with primary antibody(1/500) for 1 hours at room temperature. A undiluted biotinylated CRF Anti-Polyvalent HRP Polymer antibody was used as the secondary antibody.

## Submit a product review to Biocompare.com

Submit a review of this product to Biocompare.com to receive a \$20 Amazon.com giftcard! Your reviews help your fellow scientists make the right decisions. Thank you for your contribution.



Anti-AP1M1 Antibody (Center)

For Research Use Only. Not for use in diagnostic procedures.