

Anti-Phospho-ERK 8 (T175/Y177) MAPK15 Antibody

Catalog Number: A10088T175Y177

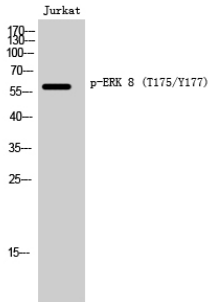
Overview

Product Name	Anti-Phospho-ERK 8 (T175/Y177) MAPK15 Antibody
Reactive Species	Human, Mouse
Description	Boster Bio Anti-Phospho-ERK 8 (T175/Y177) MAPK15 Antibody catalog # A10088T175Y177. Tested in WB, IHC, IF, ELISA applications. This antibody reacts with Human, Mouse.
Application	ELISA, IF, IHC, WB
Clonality	Polyclonal
Formulation	Liquid in PBS containing 50% glycerol, 0.5% stabilizing protein and 0.02% sodium azide. This antibody is supplied in a stabilized formulation. Compatibility with conjugation reactions depends on the chemistry of the conjugation method used. For conjugation methods that are not compatible with the stabilizing components present in this formulation, a carrier-free antibody format is required.
Storage Instructions	Store at -20°C for one year. For short term storage and frequent use, store at 4°C for up to one month. Avoid repeated freeze-thaw cycles.
Host	Rabbit
Uniprot ID	Q8TD08

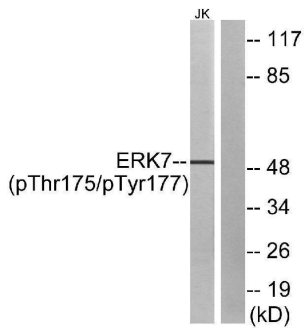
Technical Details

Immunogen	The antiserum was produced against synthesized peptide derived from human ERK8 around the phosphorylation site of Thr175 and Tyr177. AA range:141-190
Isotype	IgG
Form	Liquid
Concentration	1 mg/ml
Purification	The antibody was affinity-purified from rabbit antiserum by affinity-chromatography using epitope-specific immunogen.
Suggested Dilutions	WB 1:500-1:2000 IHC 1:100-1:300 ELISA 1:5000 IF 1:50-200

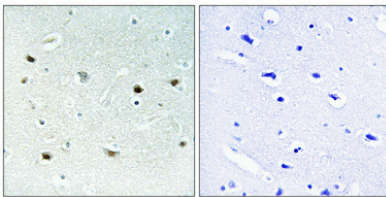
Anti-Phospho-ERK 8 (T175/Y177) MAPK15 Antibody (A10088T175Y177) Images



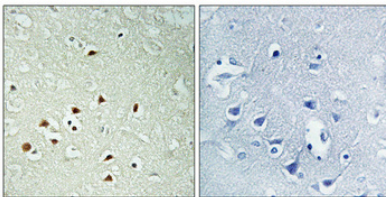
Western Blot analysis of Jurkat cells using Phospho-ERK 8 (T175/Y177) Polyclonal Antibody cells nucleus extracted by Minute TM Cytoplasmic and Nuclear Fractionation kit .



Western blot analysis of lysates from Jurkat cells, using ERK8 (Phospho-Thr175+Tyr177) Antibody. The lane on the right is blocked with the phospho peptide.



Immunohistochemical analysis of paraffin-embedded Human brain. Antibody was diluted at 1:100 (4° overnight). High-pressure and temperature Tris-EDTA, pH8.0 was used for antigen retrieval. Negative contrl (right) obtained from antibody was pre-absorbed by immunogen peptide.



Immunohistochemical analysis of paraffin-embedded Human brain. Antibody was diluted at 1:100 (4° overnight). High-pressure and temperature Tris-EDTA, pH8.0 was used for antigen retrieval. Negative contrl (right) obtained from antibody was pre-absorbed by immunogen peptide.

Submit a product review to [Biocompare.com](https://www.biocompare.com)

Submit a review of this product to [Biocompare.com](https://www.biocompare.com) to receive a \$20 Amazon.com giftcard! Your reviews help your fellow scientists make the right decisions. Thank you for your contribution.



Anti-Phospho-ERK 8 (T175/Y177) MAPK15 Antibody

For Research Use Only. Not for use in diagnostic procedures.