

## Anti-RPL37A/Ribosomal Protein L37A Antibody

Catalog Number: A10125

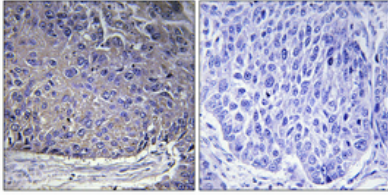
### Overview

Product Name	Anti-RPL37A/Ribosomal Protein L37A Antibody
Reactive Species	Human, Mouse, Rat
Description	Boster Bio Anti-RPL37A/Ribosomal Protein L37A Antibody (Catalog# A10125). Tested in IHC, ICC, IF, WB, ELISA applications. This antibody reacts with Human, Mouse, Rat.
Application	ELISA, IF, IHC, ICC, WB
Clonality	Polyclonal
Formulation	PBS containing 50% glycerol, 0.5% stabilizing protein and 0.02% sodium azide. This antibody is supplied in a stabilized formulation. Compatibility with conjugation reactions depends on the chemistry of the conjugation method used. For conjugation methods that are not compatible with the stabilizing components present in this formulation, a carrier-free antibody format is required.
Storage Instructions	Store at -20°C for one year. For short-term storage and frequent use, store at 4°C for up to one month. Avoid repeated freeze-thaw cycles.
Host	Rabbit
Uniprot ID	P61513

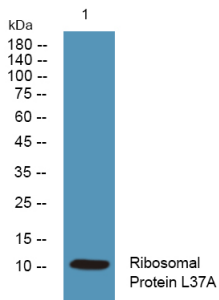
### Technical Details

Immunogen	A peptide derived from human RPL37A. Immunogen sequence location: 21-70
Isotype	Rabbit IgG
Form	Liquid
Concentration	0.5-1mg/ml, actual concentration vary by lot. Use suggested dilution ratio to decide dilution procedure.
Purification	The antibody was purified from rabbit antiserum by affinity-chromatography using immunogen.
Suggested Dilutions	WB 1:500-2000 IHC 1:100 - 1:300. ELISA: 1:40000. ICC/IF 1:50-200

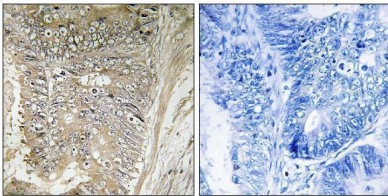
## Anti-RPL37A/Ribosomal Protein L37A Antibody (A10125) Images



Immunohistochemical analysis of paraffin-embedded Human lung cancer. Antibody was diluted at 1:100(4° overnight). High-pressure and temperature Tris-EDTA,pH8.0 was used for antigen retrieval. Negative control (right) obtained from antibody was pre-absorbed by immunogen peptide.



Western blot analysis of lysates from K562 cells, primary antibody was diluted at 1:1000, 4°over night



Immunohistochemistry analysis of paraffin-embedded human colon carcinoma tissue, using RPL37A Antibody. The picture on the right is blocked with the synthesized peptide.

### Submit a product review to [Biocompare.com](https://www.biocompare.com)

Submit a review of this product to [Biocompare.com](https://www.biocompare.com) to receive a \$20 Amazon.com giftcard! Your reviews help your fellow scientists make the right decisions. Thank you for your contribution.



Anti-RPL37A/Ribosomal Protein L37A Antibody

For Research Use Only. Not for use in diagnostic procedures.