

Anti-ELOVL7 Antibody

Catalog Number: A10141

About ELOVL7

Lipogenesis is a key event in the energy storage system and is controlled by the transcription factor sterol regulatory element-binding protein (SREBP)-1. Elongation of very long chain fatty acids protein 7 (ELOVL7) is a member of fatty acyl-CoA elongase gene family that elongates saturated very-long-chain fatty acids (SVLFA, C20:0-) and has been suggested to be involved in prostate cancer growth through saturated long-chain fatty acid metabolism. The metabolic pathways of long-chain fatty acids play an important role in the maintenance of membrane lipid composition and the generation of cell signaling precursor molecules such as eicosanoids and sphingosine-1 phosphate. Overexpression of ELOVL7 results in lipid accumulation in differentiated adipocytes; its expression is regulated by the microRNA miR-219.

Overview

Product Name	Anti-ELOVL7 Antibody
Reactive Species	Human, Mouse
Description	Boster Bio Anti-ELOVL7 Antibody (Catalog # A10141). Tested in ELISA, WB, IHC-P, IF applications. This antibody reacts with Human, Mouse.
Application	ELISA, IF, IHC-P, WB
Clonality	Polyclonal
Formulation	ELOVL7 Antibody is supplied in PBS containing 0.02% sodium azide.
Storage Instructions	Antibody can be stored at 4°C up to one year. Antibodies should not be exposed to prolonged high temperatures.
Host	Rabbit
Uniprot ID	A1L3X0

Technical Details

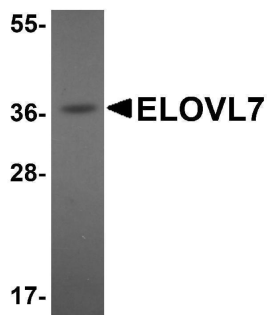
Immunogen	ELOVL7 antibody was raised against a 15 amino acid synthetic peptide near the amino terminus of human ELOVL7. The immunogen is located within amino acids 40 - 90 of ELOVL7.
Predicted Reactive Species	Bovine, Rat
Isotype	IgG
Form	Liquid
Concentration	1 mg/mL
Purification	ELOVL7 Antibody is affinity chromatography purified via peptide column.

Suggested Dilutions

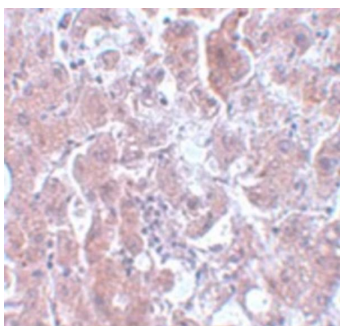
ELOVL7 antibody can be used for detection of ELOVL7 by Western blot at 1 ug/mL. Antibody can also be used for immunohistochemistry starting at 5 ug/mL. For immunofluorescence start at 20 ug/mL.

Antibody validated: Western Blot in human samples; Immunohistochemistry in human samples and Immunofluorescence in human samples. All other applications and species not yet tested. Optimal dilutions for each application should be determined by the researcher.

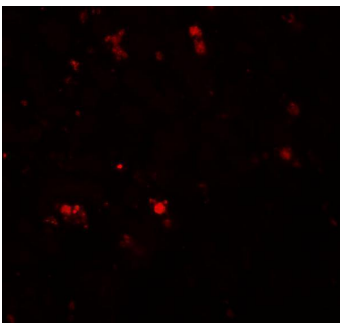
Anti-ELOVL7 Antibody (A10141) Images



Western blot analysis of ELOVL7 in human liver tissue lysate with ELOVL7 antibody at 1 ug/mL.



Immunohistochemistry of ELOVL7 in human liver tissue with ELOVL7 antibody at 5 ug/mL.



Immunofluorescence of ELOVL7 in human liver tissue with ELOVL7 antibody at 20 ug/mL.

Submit a product review to [Biocompare.com](https://www.biocompare.com)

Submit a review of this product to [Biocompare.com](https://www.biocompare.com) to receive a \$20 Amazon.com giftcard! Your reviews help your fellow scientists make the right decisions. Thank you for your contribution.



Anti-ELOVL7 Antibody

For Research Use Only. Not for use in diagnostic procedures.