

## Anti-Synaptogyrin-1 SYNGR1 Antibody

Catalog Number: A10148

### About SYNGR1

Synaptogyrins comprise a family of tyrosine-phosphorylated membrane proteins with two neuronal (SYNGR1 and SYNGR3) and one ubiquitous (SYNGR2) members. SYNGR1 and -3 are synaptic vesicle proteins, residing in some cases on the same synaptic vesicle, and are thought to be involved in the regulation of neurotransmitter release. SYNGR2, by contrast, is absent from synaptic vesicles. The role and localization of a fourth synaptogyrin, SYNGR4, is unclear. The gene for SYNGR1 is located at chromosome 22q13, a region linked to schizophrenia; however, there is mixed evidence suggesting that mutations in SYNGR1 might be associated with schizophrenia.

### Overview

Product Name	Anti-Synaptogyrin-1 SYNGR1 Antibody
Reactive Species	Human, Mouse, Rat
Description	Boster Bio Anti-Synaptogyrin-1 SYNGR1 Antibody (Catalog # A10148). Tested in ELISA, WB, IHC-P, IF applications. This antibody reacts with Human, Mouse, Rat.
Application	ELISA, IF, IHC-P, WB
Clonality	Polyclonal
Formulation	SYNGR1 Antibody is supplied in PBS containing 0.02% sodium azide.
Storage Instructions	Antibody can be stored at 4°C up to one year. Antibodies should not be exposed to prolonged high temperatures.
Host	Rabbit
Uniprot ID	O43759

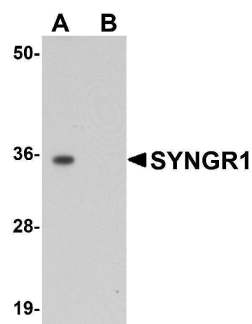
### Technical Details

Immunogen	SYNGR1 antibody was raised against a 16 amino acid synthetic peptide from near the center of human SYNGR1. The immunogen is located within amino acids 120 - 170 of SYNGR1.
Predicted Reactive Species	Bovine, Rat
Isotype	IgG
Form	Liquid
Concentration	1 mg/mL
Purification	SYNGR1 Antibody is affinity chromatography purified via peptide column.
Suggested Dilutions	SYNGR1 antibody can be used for detection of SYNGR1 by Western blot at 1 ug/mL. Antibody can also be used for immunohistochemistry starting at 2.5 ug/mL. For immunofluorescence start at 20

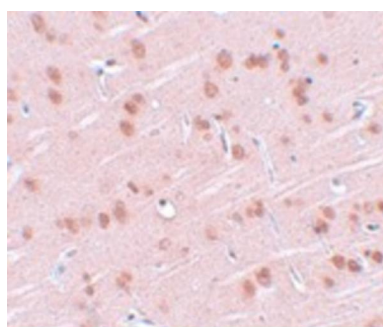
ug/mL.

Antibody validated: Western Blot in rat samples; Immunohistochemistry in rat samples and Immunofluorescence in rat samples. All other applications and species not yet tested. Optimal dilutions for each application should be determined by the researcher.

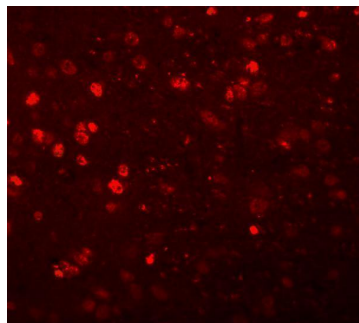
## Anti-Synaptogyrin-1 SYNGR1 Antibody (A10148) Images



Western blot analysis of SYNGR1 in rat brain tissue lysate with SYNGR1 antibody at 1 ug/mL in (A) the absence and (B) the presence of blocking peptide.



Immunohistochemistry of SYNGR1 in rat brain tissue with SYNGR1 antibody at 2.5 ug/mL.



Immunofluorescence of SYNGR1 in rat brain tissue with SYNGR1 antibody at 20 ug/mL.

### Submit a product review to [Biocompare.com](https://www.biocompare.com)

Submit a review of this product to [Biocompare.com](https://www.biocompare.com) to receive a \$20 Amazon.com giftcard! Your reviews help your fellow scientists make the right decisions. Thank you for your contribution.



Anti-Synaptogyrin-1 SYNGR1 Antibody

For Research Use Only. Not for use in diagnostic procedures.