

## Anti-Ceramide glucosyltransferase UGCG Antibody

Catalog Number: A10209

### About UGCG

This gene encodes a member of a PHD finger-containing gene family. This gene may function as a transcription factor and may be involved in glioblastomas development. Alternative splicing results in multiple transcript variants.

Fischer U., Cytogenet. Cell Genet. 94:131-136(2001).

Nagase T., DNA Res. 3:321-329(1996).

Nakajima D., DNA Res. 9:99-106(2002).

### Overview

Product Name	Anti-Ceramide glucosyltransferase UGCG Antibody
Reactive Species	Human, Mouse, Rat
Description	Boster Bio Anti-Ceramide glucosyltransferase UGCG Antibody catalog # A10209. Tested in WB applications. This antibody reacts with Human,Mouse,Rat.
Application	WB
Clonality	Polyclonal
Formulation	Rabbit IgG, 1mg/ml in PBS with 0.02% sodium azide, 50% glycerol, pH7.2
Storage Instructions	Store at -20°C for one year. For short term storage and frequent use, store at 4°C for up to one month. Avoid repeated freeze-thaw cycles.
Host	Rabbit
Uniprot ID	Q16739

### Technical Details

Immunogen	Synthesized peptide derived from human ATS20 protein.
Predicted Reactive Species	Chimpanzee, Drosophila, Macaque
Isotype	IgG
Form	Liquid
Concentration	1 mg/ml
Purification	The antibody was affinity-purified from rabbit antiserum by affinity-chromatography using epitope-specific immunogen and the purity is > 95% (by SDS-PAGE).

**Suggested Dilutions**

Dilute the sample so that the expected range of concentrations fall within the detection range of this kit.

If the expected range of concentration is unknown, a pilot test should be conducted to decide the optimal dilution ratio for your samples.

Some PubMed article(s) citing the expression level of this target are as follows:

Boster Bio's internal QC testing used:

WB: 1:500-1:1000

## Anti-Ceramide glucosyltransferase UGCG Antibody (A10209) Images

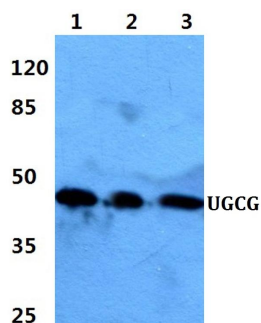


Figure 1. Western blotting validation for Anti-Ceramide glucosyltransferase UGCG Antibody A10209

Western blot (WB) analysis of UGCG polyclonal antibody at 1:500 dilution

Lane1:Hela cell lysate

Lane2:Raw264.7 cell lysate

Lane3:PC12 cell lysate

Electrophoresis was performed on a SDS-PAGE gel. To determine SDS-PAGE gel concentration

### Submit a product review to Biocompare.com

Submit a review of this product to Biocompare.com to receive a \$20 Amazon.com giftcard! Your reviews help your fellow scientists make the right decisions. Thank you for your contribution.



Anti-Ceramide glucosyltransferase UGCG Antibody