

Anti-Importin-9 IPO9 Antibody

Catalog Number: A10216

About IPO9

SmarcAL1 (SWI/SNF-related matrix-associated actin-dependent regulator of chromatin a-like 1) is also known as HARP, HepA Related Protein, HHARP, SMARCA like Protein 1 and SWI/SNF Related. SmarcAL1 is a member of the SWI/SNF family of proteins. Members of this family have helicase and ATPase activities and are thought to regulate transcription of certain genes by altering the chromatin structure around those genes. The encoded protein shows sequence similarity to the E. coli RNA polymerase-binding protein HepA. Mutations in this gene are a cause of Schimke immunosseous dysplasia (SIOD), an autosomal recessive disorder with the diagnostic features of spondyloepiphyseal dysplasia, renal dysfunction, and T-cell immunodeficiency.

Overview

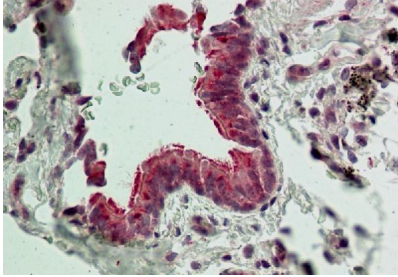
Product Name	Anti-Importin-9 IPO9 Antibody
Reactive Species	Human, Mouse
Description	Boster Bio Anti-Importin-9 IPO9 Antibody (Catalog# A10216). Tested in IHC, WB application(s). This antibody reacts with Mouse, Human.
Application	IHC, WB
Clonality	Polyclonal
Formulation	100 µg in 200 µl PBS containing 0.05% stabilizing protein and 0.05% sodium azide This antibody is supplied in a stabilized formulation. Compatibility with conjugation reactions depends on the chemistry of the conjugation method used. For conjugation methods that are not compatible with the stabilizing components present in this formulation, a carrier-free antibody format is required.
Storage Instructions	Store the antibody at 4°C, stable for 6 months. For long-term storage, store at -20°C. Avoid repeated freeze and thaw cycles.
Host	Rabbit
Uniprot ID	Q96P70

Technical Details

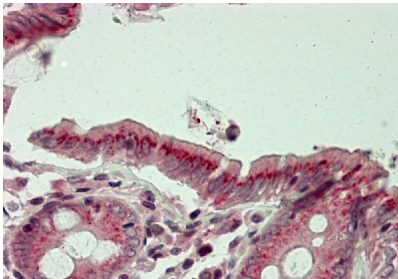
Immunogen	A partial length recombinant Importin-9 protein (amino acids 740-1,041)
Predicted Reactive Species	Chimpanzee
Cross Reactivity	No cross reactivity with other proteins.
Isotype	Rabbit IgG
Form	Liquid

Concentration	0.5-1mg/ml, actual concentration vary by lot. Use suggested dilution ratio to decide dilution procedure.
Purification	Protein A Chromatography
Suggested Dilutions	Western blot: 0.25-1.0 µg/ml IHC: 5 µg/ml

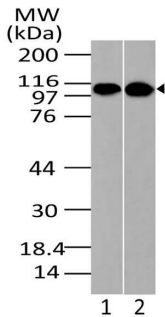
Anti-Importin-9 IPO9 Antibody (A10216) Images



Immunohistochemical analysis of Importin-9. Anti-Importin-9 antibody (Respiratory Epithelium tissue at 5 &mu



Immunohistochemical analysis of Importin-9. Anti-Importin-9 antibody in human Colon tissue at 5 &mu



Western blot analysis of Importin-9. Anti-Importin-9 antibody was used at 0.25 &mu

Submit a product review to Biocompare.com

Submit a review of this product to Biocompare.com to receive a \$20 Amazon.com giftcard! Your reviews help your fellow scientists make the right decisions. Thank you for your contribution.



Anti-Importin-9 IPO9 Antibody

For Research Use Only. Not for use in diagnostic procedures.