

Anti-CCDC55 NSRP1 Antibody

Catalog Number: A10218

About NSRP1

CCDC55, also known as Nuclear speckle-related protein 70 (NSrp70), was initially identified by the NIH Mammalian Gene Collection. Nuclear speckles are known to be the storage sites of mRNA splicing regulators. CCDC55 has been suggested to modulate alternative pre-mRNA splicing in vivo. It co-localizes and physically interacts with the SR proteins SC35 and ASF/SF2, essential splicing factors which are required for constitutive splicing and can regulate alternative mRNA splicing. Loss of CCDC55 in mice leads to early embryonic lethality highlights the importance of the functional role of CCDC55.

Overview

Product Name	Anti-CCDC55 NSRP1 Antibody
Reactive Species	Human, Mouse, Rat
Description	Boster Bio Anti-CCDC55 NSRP1 Antibody (Catalog # A10218). Tested in ELISA, WB, IF applications. This antibody reacts with Human, Mouse, Rat.
Application	ELISA, IF, WB
Clonality	Polyclonal
Formulation	CCDC55 Antibody is supplied in PBS containing 0.02% sodium azide.
Storage Instructions	CCDC55 antibody can be stored at 4°C for three months and -20°C, stable for up to one year. Avoid repeated freeze-thaw cycles. Antibodies should not be exposed to prolonged high temperatures.
Host	Chicken
Uniprot ID	Q9H0G5

Technical Details

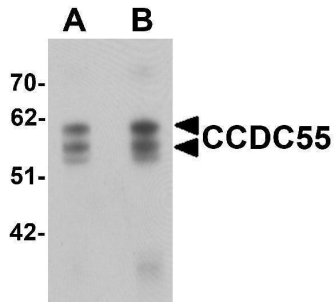
Immunogen	CCDC55 antibody was raised against a 16 amino acid synthetic peptide near the carboxy terminus of human CCDC55. The immunogen is located within amino acids 430 - 480 of CCDC55.
Predicted Reactive Species	Bovine
Cross Reactivity	At least three isoforms are known to exist; this antibody will detect all three.
Isotype	IgY
Form	Liquid
Concentration	1 mg/mL
Purification	CCDC55 Antibody is affinity chromatography purified via peptide column.

Suggested Dilutions

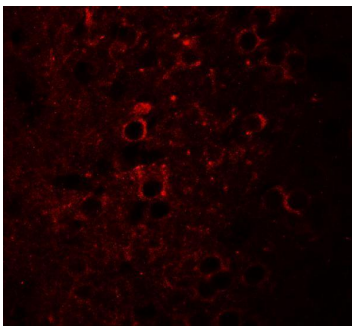
CCDC55 antibody can be used for detection of CCDC55 by Western blot at 0.5 - 1 ug/mL. Antibody can also be used for immunofluorescence starting at 20 ug/mL. For immunofluorescence start at 20 ug/mL.

Antibody validated: Western Blot in human samples and Immunofluorescence in mouse samples. All other applications and species not yet tested. Optimal dilutions for each application should be determined by the researcher.

Anti-CCDC55 NSRP1 Antibody (A10218) Images



Western blot analysis of CCDC55 in human brain tissue lysate with CCDC55 antibody at (A) 0.5 and (B) 1 ug/mL



Immunofluorescence of CCDC55 in mouse brain cells with CCDC55 antibody at 20 ug/mL.

Submit a product review to [Biocompare.com](https://www.biocompare.com)

Submit a review of this product to [Biocompare.com](https://www.biocompare.com) to receive a \$20 Amazon.com giftcard! Your reviews help your fellow scientists make the right decisions. Thank you for your contribution.



Anti-CCDC55 NSRP1 Antibody

For Research Use Only. Not for use in diagnostic procedures.