

## Anti-Ribosomal Protein L39 RPL39 Antibody

Catalog Number: A10219-1

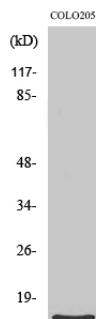
### Overview

Product Name	Anti-Ribosomal Protein L39 RPL39 Antibody
Reactive Species	Human, Mouse, Rat
Description	Boster Bio Anti-Ribosomal Protein L39 RPL39 Antibody catalog # A10219-1. Tested in ELISA, IF, IHC, WB applications. This antibody reacts with Human, Mouse, Rat.
Application	ELISA, IF, IHC, WB
Clonality	Polyclonal
Formulation	Liquid in PBS containing 50% glycerol, 0.5% stabilizing protein and 0.02% sodium azide. This antibody is supplied in a stabilized formulation. Compatibility with conjugation reactions depends on the chemistry of the conjugation method used. For conjugation methods that are not compatible with the stabilizing components present in this formulation, a carrier-free antibody format is required.
Storage Instructions	Store at -20°C for one year. For short term storage and frequent use, store at 4°C for up to one month. Avoid repeated freeze-thaw cycles.
Host	Rabbit
Uniprot ID	P62891

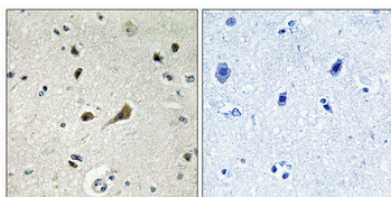
### Technical Details

Immunogen	The antiserum was produced against synthesized peptide derived from human RPL39. AA range:1-50
Isotype	IgG
Form	Liquid
Concentration	1 mg/ml
Purification	The antibody was affinity-purified from rabbit antiserum by affinity-chromatography using epitope-specific immunogen.
Suggested Dilutions	WB 1:500-1:2000 IHC 1:100-1:300 IF 1:200-1:1000 ELISA 1:40000

## Anti-Ribosomal Protein L39 RPL39 Antibody (A10219-1) Images



Western blotting validation for Anti-Ribosomal Protein L39 RPL39 Antibody A10219-1 Western Blot (WB) analysis of specific cells using Ribosomal Protein L39 polyclonal antibody. Electrophoresis was performed on a SDS-PAGE gel. To determine SDS-PAGE gel concentration



Immunohistochemistry validation of RPL39 using Anti-Ribosomal Protein L39 RPL39 Antibody (A10219-1). Immunohistochemical analysis of paraffin-embedded Human brain. Antibody was diluted at 1:100 (4°C)

### Submit a product review to Biocompare.com

Submit a review of this product to Biocompare.com to receive a \$20 Amazon.com giftcard! Your reviews help your fellow scientists make the right decisions. Thank you for your contribution.



### Anti-Ribosomal Protein L39 RPL39 Antibody

For Research Use Only. Not for use in diagnostic procedures.