

Anti-PPP1R15B Antibody Picoband®

Catalog Number: A10225-2

About PPP1R15B

PPP1R15B (Protein phosphatase 1, regulatory subunit 15b), also called CREP, promotes dephosphorylation of the transcription initiation factor EIF2-alpha through recruitment of protein phosphatase-1 (PP1) catalytic subunits. The PPP1R15B gene is mapped to chromosome 1q32.1 based on an alignment of the PPP1R15B sequence by Hartz (2010). Harding et al. (2009) obtained Ppp1r15b^{-/-} mice at a mendelian ratio. However, Ppp1r15b^{-/-} newborns were half the size of their wildtype littermates, were notably pale, and failed to nurse, and none survived the first day of postnatal life. Ppp1r15b^{-/-} embryos that were also homozygous for an Eif2-alpha mutation that prevented Eif2-alpha phosphorylation were normalized, including elevated birth size and restored red blood cell count, compared with Ppp1r15b^{-/-} embryos with wildtype Eif2-alpha.

Overview

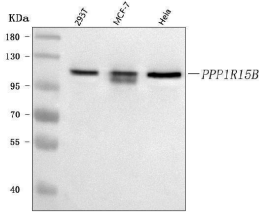
Product Name	Anti-PPP1R15B Antibody Picoband®
Reactive Species	Human
Description	Boster Bio Anti-PPP1R15B Antibody Picoband® catalog # A10225-2. Tested in ELISA, WB, Flow Cytometry applications. This antibody reacts with Human. The brand Picoband indicates this is a premium antibody that guarantees superior quality, high affinity, and strong signals with minimal background in Western blot applications. Only our best-performing antibodies are designated as Picoband, ensuring unmatched performance.
Application	ELISA, Flow Cytometry, WB
Clonality	Polyclonal
Formulation	Each vial contains 4 mg Trehalose, 0.9 mg NaCl, 0.2 mg Na ₂ HPO ₄ .
Storage Instructions	At -20°C for one year from date of receipt. After reconstitution, at 4°C for one month. It can also be aliquotted and stored frozen at -20°C for six months. Avoid repeated freezing and thawing.
Host	Rabbit
Uniprot ID	Q5SWA1

Technical Details

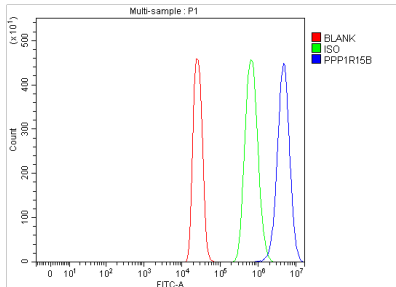
Immunogen	E.coli-derived human PPP1R15B recombinant protein (Position: Q211-D657).
Recommended Detection Systems	Boster recommends Enhanced Chemiluminescent Kit with anti-Rabbit IgG (EK1002) for Western blot.
Cross Reactivity	No cross-reactivity with other proteins
Isotype	Rabbit IgG
Form	Lyophilized

Concentration	Adding 0.2 ml of distilled water will yield a concentration of 500 µg/ml.
Purification	Immunogen affinity purified.
Suggested Dilutions	Western blot, 0.25-0.5 ug/ml, Human Flow Cytometry (Fixed), 1-3 ug/1x10 ⁶ cells, Human ELISA, 0.1-0.5 ug/ml, -

Anti-PPP1R15B Antibody Picoband® (A10225-2) Images



Western blot analysis of PPP1R15B using anti-PPP1R15B antibody (A10225-2). Electrophoresis was performed on a 5-20% SDS-PAGE gel at 70V (Stacking gel) / 90V (Resolving gel) for 2-3 hours. The sample well of each lane was loaded with 30 ug of sample under reducing conditions. Lane 1: human 293T whole cell lysates, Lane 2: human MCF-7 whole cell lysates, Lane 3: human HeLa whole cell lysates. After electrophoresis, proteins were transferred to a nitrocellulose membrane at 150 mA for 50-90 minutes. Blocked the membrane with 5% non-fat milk/TBS for 1.5 hour at RT. The membrane was incubated with rabbit anti-PPP1R15B antigen affinity purified polyclonal antibody (Catalog # A10225-2) at 0.5 ug/mL overnight at 4°C, then washed with TBS-0.1%Tween 3 times with 5 minutes each and probed with a goat anti-rabbit IgG-HRP secondary antibody at a dilution of 1:5000 for 1.5 hour at RT. The signal is developed using an Enhanced Chemiluminescent detection (ECL) kit (Catalog # EK1002) with Tanon 5200 system. A specific band was detected for PPP1R15B at approximately 110 kDa. The expected band size for PPP1R15B is at 110 kDa.



Flow Cytometry analysis of 293T cells using anti-PPP1R15B antibody (A10225-2). Overlay histogram showing 293T cells stained with A10225-2 (Blue line). To facilitate intracellular staining, cells were fixed with 4% paraformaldehyde and permeabilized with permeabilization buffer. The cells were blocked with 10% normal goat serum. And then incubated with rabbit anti-PPP1R15B Antibody (A10225-2, 1 ug/1x10⁶ cells) for 30 min at 20°C. DyLight®488 conjugated goat anti-rabbit IgG (BA1127, 5-10 ug/1x10⁶ cells) was used as secondary antibody for 30 minutes at 20°C. Isotype control antibody (Green line) was rabbit IgG (1 ug/1x10⁶) used under the same conditions. Unlabelled sample (Red line) was also used as a control.

Submit a product review to [Biocompare.com](https://www.biocompare.com)

Submit a review of this product to [Biocompare.com](https://www.biocompare.com) to receive a \$20 Amazon.com giftcard! Your reviews help your fellow scientists make the right decisions. Thank you for your contribution.



Anti-PPP1R15B Antibody

For Research Use Only. Not for use in diagnostic procedures.