

Anti-SLC2A11 Antibody

Catalog Number: A10242-1

About SLC2A11

This gene belongs to a family of proteins that mediate the transport of sugars across the cell membrane. The encoded protein transports glucose and fructose. Alternative splicing results in multiple transcript variants.

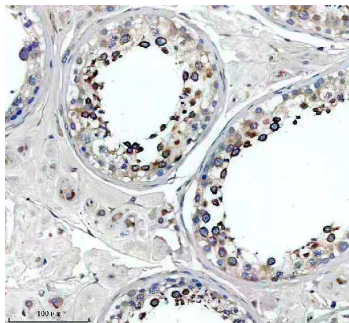
Overview

Product Name	Anti-SLC2A11 Antibody
Reactive Species	Human
Description	Boster Bio Anti-SLC2A11 Antibody catalog # A10242-1. Tested in IHC applications. This antibody reacts with Human.
Application	IHC
Clonality	Polyclonal
Formulation	Each vial contains 4 mg Trehalose, 0.9 mg NaCl, 0.2 mg Na ₂ HPO ₄ .
Storage Instructions	At -20°C for one year from date of receipt. After reconstitution, at 4°C for one month. It can also be aliquotted and stored frozen at -20°C for six months. Avoid repeated freezing and thawing.
Host	Rabbit
Uniprot ID	Q9BYW1

Technical Details

Immunogen	A synthetic peptide corresponding to a sequence at the C-terminus of human SLC2A11.
Form	Lyophilized
Concentration	Adding 0.2 ml of distilled water will yield a concentration of 500 ug/ml.
Purification	Immunogen affinity purified.
Suggested Dilutions	Immunohistochemistry(Paraffin-embedded Section), 2-5 ug/ml, Human

Anti-SLC2A11 Antibody (A10242-1) Images



IHC analysis of SLC2A11 using anti-SLC2A11 antibody (A10242-1). SLC2A11 was detected in a paraffin-embedded section of human testis tissue. Heat mediated antigen retrieval was performed in EDTA buffer (pH 8.0, epitope retrieval solution). The tissue section was blocked with 10% goat serum. The tissue section was then incubated with 2 ug/ml rabbit anti-SLC2A11 Antibody (A10242-1) overnight at 4°C. Peroxidase Conjugated Goat Anti-rabbit IgG was used as secondary antibody and incubated for 30 minutes at 37°C. The tissue section was developed using HRP Conjugated Rabbit IgG Super Vision Assay Kit (Catalog # SV0002) with DAB as the chromogen.

Submit a product review to Biocompare.com

Submit a review of this product to Biocompare.com to receive a \$20 Amazon.com giftcard! Your reviews help your fellow scientists make the right decisions. Thank you for your contribution.



Anti-SLC2A11 Antibody

For Research Use Only. Not for use in diagnostic procedures.