

Anti-Rabphilin-3A RPH3A Antibody

Catalog Number: A10247

Overview

Product Name	Anti-Rabphilin-3A RPH3A Antibody
Reactive Species	Human, Mouse, Rat
Description	Boster Bio Anti-Rabphilin-3A RPH3A Antibody catalog # A10247. Tested in WB, IHC, IF, ELISA applications. This antibody reacts with Human, Mouse, Rat.
Application	ELISA, IF, IHC, WB
Clonality	Polyclonal
Formulation	Liquid in PBS containing 50% glycerol, 0.5% stabilizing protein and 0.02% sodium azide. This antibody is supplied in a stabilized formulation. Compatibility with conjugation reactions depends on the chemistry of the conjugation method used. For conjugation methods that are not compatible with the stabilizing components present in this formulation, a carrier-free antibody format is required.
Storage Instructions	Store at -20°C for one year. For short term storage and frequent use, store at 4°C for up to one month. Avoid repeated freeze-thaw cycles.
Host	Rabbit
Uniprot ID	Q9Y2J0

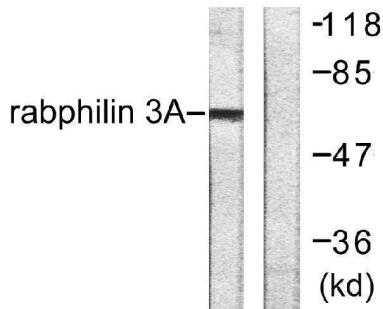
Technical Details

Immunogen	The antiserum was produced against synthesized peptide derived from human Rabphilin 3A. AA range:203-252
Isotype	IgG
Form	Liquid
Concentration	1 mg/ml
Purification	The antibody was affinity-purified from rabbit anti-serum by affinity-chromatography.
Suggested Dilutions	WB 1:500-1:2000 IHC 1:100-1:300 IF 1:200-1:1000 ELISA 1:5000

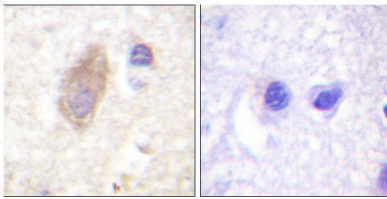
Anti-Rabphilin-3A RPH3A Antibody (A10247) Images



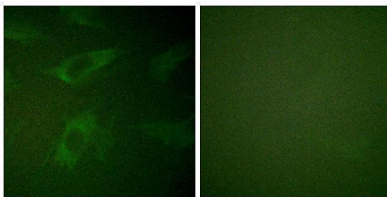
Western Blot analysis of various cells using Rabphilin-3A Polyclonal Antibody



Western blot analysis of lysates from HeLa cells, treated with TNF- α 20ng/ml 2', using Rabphilin 3A Antibody. The lane on the right is blocked with the synthesized peptide.



Immunohistochemistry analysis of paraffin-embedded human brain tissue, using Rabphilin 3A Antibody. The picture on the right is blocked with the synthesized peptide.



Immunofluorescence analysis of HeLa cells, using Rabphilin 3A Antibody. The picture on the right is blocked with the synthesized peptide.

Submit a product review to [Biocompare.com](https://www.biocompare.com)

Submit a review of this product to [Biocompare.com](https://www.biocompare.com) to receive a \$20 Amazon.com giftcard! Your reviews help your fellow scientists make the right decisions. Thank you for your contribution.



Anti-Rabphilin-3A RPH3A Antibody

For Research Use Only. Not for use in diagnostic procedures.