

Anti-Puratrophin-1 PLEKHG4 Antibody

Catalog Number: A10252

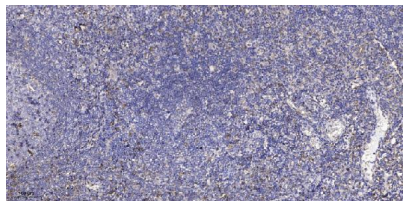
Overview

Product Name	Anti-Puratrophin-1 PLEKHG4 Antibody
Reactive Species	Human, Monkey
Description	Boster Bio Anti-Puratrophin-1 PLEKHG4 Antibody (Catalog# A10252). Tested in WB, IHC, ICC, IF, ELISA applications. This antibody reacts with Human, Monkey.
Application	ELISA, IF, IHC, ICC, WB
Clonality	Polyclonal
Formulation	PBS containing 50% glycerol, 0.5% stabilizing protein and 0.02% sodium azide. This antibody is supplied in a stabilized formulation. Compatibility with conjugation reactions depends on the chemistry of the conjugation method used. For conjugation methods that are not compatible with the stabilizing components present in this formulation, a carrier-free antibody format is required.
Storage Instructions	Store at -20°C for one year. For short-term storage and frequent use, store at 4°C for up to one month. Avoid repeated freeze-thaw cycles.
Host	Rabbit
Uniprot ID	Q58EX7

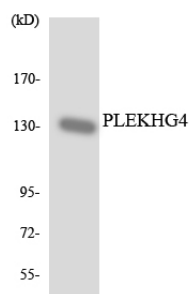
Technical Details

Immunogen	A peptide derived from human PLEKHG4. Immunogen sequence location: 654 - 703
Isotype	Rabbit IgG
Form	Liquid
Concentration	0.5-1mg/ml, actual concentration vary by lot. Use suggested dilution ratio to decide dilution procedure.
Purification	The antibody was purified from rabbit antiserum by affinity-chromatography using immunogen.
Suggested Dilutions	WB 1:500 - 1:2000. IHC 1:100 - 1:300. ELISA: 1:20000. ICC/IF 1:50-200

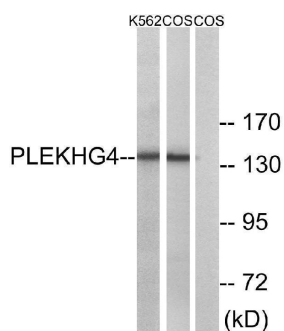
Anti-Puratrophin-1 PLEKHG4 Antibody (A10252) Images



Immunohistochemical analysis of paraffin-embedded human tonsil. 1, Antibody was diluted at 1:200(4° overnight). 2, Tris-EDTA,pH9.0 was used for antigen retrieval. 3,Secondary antibody was diluted at 1:200(room temperature, 30min).



Western blot analysis of the lysates from HUVEC cells using PLEKHG4 antibody.



Western blot analysis of lysates from COS7 and K562 cells, using PLEKHG4 Antibody. The lane on the right is blocked with the synthesized peptide.

Submit a product review to Biocompare.com

Submit a review of this product to Biocompare.com to receive a \$20 Amazon.com giftcard! Your reviews help your fellow scientists make the right decisions. Thank you for your contribution.



Anti-Puratrophin-1 PLEKHG4 Antibody

For Research Use Only. Not for use in diagnostic procedures.