

## Anti-TMEFF1 Antibody Picoband®

Catalog Number: A10268-3

### About TMEFF1

This locus represents naturally occurring read-through transcription from the neighboring MSANTD3 (Myb/SANT-like DNA-binding domain containing 3) and TMEFF1 (transmembrane protein with EGF-like and two follistatin-like domains 1) genes. The read-through transcript encodes a fusion protein that shares sequence identity with the products of each individual gene.

### Overview

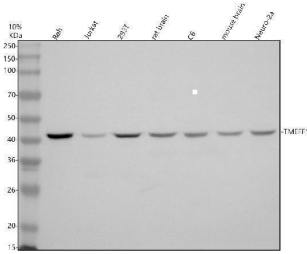
Product Name	Anti-TMEFF1 Antibody Picoband®
Reactive Species	Human, Mouse, Rat
Description	Boster Bio Anti-TMEFF1 Antibody Picoband® catalog # A10268-3. Tested in WB, ELISA applications. This antibody reacts with Human, Mouse, Rat. The brand Picoband indicates this is a premium antibody that guarantees superior quality, high affinity, and strong signals with minimal background in Western blot applications. Only our best-performing antibodies are designated as Picoband, ensuring unmatched performance.
Application	ELISA, WB
Clonality	Polyclonal
Formulation	Each vial contains 4 mg Trehalose, 0.9 mg NaCl, 0.2 mg Na <sub>2</sub> HPO <sub>4</sub> .
Storage Instructions	At -20°C for one year from date of receipt. After reconstitution, at 4°C for one month. It can also be aliquotted and stored frozen at -20°C for six months. Avoid repeated freezing and thawing.
Host	Rabbit
Uniprot ID	Q8IYR6

### Technical Details

Immunogen	E.coli-derived human TMEFF1 recombinant protein (Position: K60-L331). Human TMEFF1 shares 96.3% amino acid (aa) sequence identity with both mouse and rat TMEFF1.
Form	Lyophilized
Concentration	Adding 0.2 ml of distilled water will yield a concentration of 500 ug/ml.
Purification	Immunogen affinity purified.
Suggested Dilutions	Western blot, 0.25-0.5 ug/ml, Human, Mouse, Rat ELISA, 0.1-0.5 ug/ml



## Anti-TMEFF1 Antibody Picoband® (A10268-3) Images



Western blot analysis of TMEFF1 using anti-TMEFF1 antibody (A10268-3). Electrophoresis was performed on a 10% SDS-PAGE gel at 80V (Stacking gel) / 120V (Resolving gel) for 2 hours. The sample well of each lane was loaded with 30 ug of sample under reducing conditions. Lane 1: human REH whole cell lysates, Lane 2: human Jurkat whole cell lysates, Lane 3: human 293T whole cell lysates, Lane 4: rat brain tissue lysates, Lane 5: rat C6 whole cell lysates, Lane 6: mouse brain tissue lysates, Lane 7: mouse Neuro-2a whole cell lysates. After electrophoresis, proteins were transferred to a nitrocellulose membrane at 150 mA for 50-90 minutes. Blocked the membrane with 5% non-fat milk/TBS for 1.5 hour at RT. The membrane was incubated with rabbit anti-TMEFF1 antigen affinity purified polyclonal antibody (A10268-3) at 0.5 ug/mL overnight at 4°C, then washed with TBS-0.1% Tween 3 times with 5 minutes each and probed with a goat anti-rabbit IgG-HRP secondary antibody at a dilution of 1:5000 for 1.5 hour at RT. The signal is developed using an ECL Plus Western Blotting Substrate (Catalog # AR1196-200) with Tanon 5200 system. A specific band was detected for TMEFF1 at approximately 41 kDa. The expected band size for TMEFF1 is at 41 kDa.

### Submit a product review to [Biocompare.com](https://www.biocompare.com)

Submit a review of this product to [Biocompare.com](https://www.biocompare.com) to receive a \$20 Amazon.com giftcard! Your reviews help your fellow scientists make the right decisions. Thank you for your contribution.



### Anti-TMEFF1 Antibody

For Research Use Only. Not for use in diagnostic procedures.