

## Anti-Arylsulfatase E ARSE Antibody

Catalog Number: A10294-1

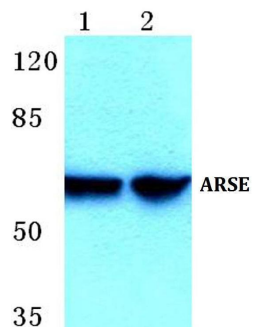
### Overview

Product Name	Anti-Arylsulfatase E ARSE Antibody
Reactive Species	Human
Description	Boster Bio Anti-Arylsulfatase E ARSE Antibody catalog # A10294-1. Tested in WB,ICC applications. This antibody reacts with Human.
Application	ICC, WB
Clonality	Polyclonal
Formulation	Rabbit IgG, 1mg/ml in PBS with 0.02% sodium azide, 50% glycerol, pH7.2
Storage Instructions	Store at -20°C for one year. For short term storage and frequent use, store at 4°C for up to one month. Avoid repeated freeze-thaw cycles.
Host	Rabbit
Uniprot ID	P51690

### Technical Details

Immunogen	Synthetic peptide, corresponding to amino acids 208-253 of Human ARSE.
Isotype	IgG
Form	Liquid
Concentration	1 mg/ml
Purification	The antibody was affinity-purified from rabbit antiserum by affinity-chromatography using epitope-specific immunogen and the purity is > 95% (by SDS-PAGE).
Suggested Dilutions	WB: 1:500-1:1000 ICC: 1:50-1:200

## Anti-Arylsulfatase E ARSE Antibody (A10294-1) Images



Western blot (WB) analysis of ARSE polyclonal antibody at 1:500 dilution Lane1:Hela cell lysate Lane2:HEK293T cell lysate

### Submit a product review to Biocompare.com

Submit a review of this product to Biocompare.com to receive a \$20 Amazon.com giftcard! Your reviews help your fellow scientists make the right decisions. Thank you for your contribution.



Anti-Arylsulfatase E ARSE Antibody

For Research Use Only. Not for use in diagnostic procedures.