

Anti-ARSE/ASE/ARSL Antibody Picoband®

Catalog Number: A10294-2

About ARSL

Arylsulfatase E, also known as ARSE, is an enzyme that, in humans, is encoded by the ARSE gene. Arylsulfatase E is a member of the sulfatase family. It is glycosylated postranslationally and localized to the golgi apparatus. Sulfatases are essential for the correct composition of bone and cartilage matrix. X-linked chondrodysplasia punctata, a disease characterized by abnormalities in cartilage and bone development, has been linked to mutations in this gene. Alternative splicing results in multiple transcript variants. A pseudogene related to this gene is located on the Y chromosome.

Overview

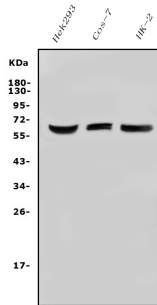
Product Name	Anti-ARSE/ASE/ARSL Antibody Picoband®
Reactive Species	Human, Monkey
Description	Boster Bio Anti-ARSE/ASE/ARSL Antibody Picoband® catalog # A10294-2. Tested in WB applications. This antibody reacts with Human, Monkey. The brand Picoband indicates this is a premium antibody that guarantees superior quality, high affinity, and strong signals with minimal background in Western blot applications. Only our best-performing antibodies are designated as Picoband, ensuring unmatched performance.
Application	WB
Clonality	Polyclonal
Formulation	Each vial contains 4mg Trehalose, 0.9mg NaCl, 0.2mg Na2HPO4, 0.01mg NaN3.
Storage Instructions	Store at -20°C for one year from date of receipt. After reconstitution, at 4°C for one month. It can also be aliquotted and stored frozen at -20°C for six months. Avoid repeated freeze-thaw cycles.
Host	Rabbit
Uniprot ID	P51690

Technical Details

Immunogen	A synthetic peptide corresponding to a sequence at the C-terminus of human ARSE/ASE/ARSL.
Recommended Detection Systems	Boster recommends Enhanced Chemiluminescent Kit with anti-Rabbit IgG (EK1002) for Western blot.
Cross Reactivity	No cross-reactivity with other proteins.
Isotype	Rabbit IgG
Form	Lyophilized
Concentration	Adding 0.2 ml of distilled water will yield a concentration of 500 ug/ml.

Purification	Immunogen affinity purified.
Suggested Dilutions	Western blot, 0.25-0.5ug/ml, Human, Monkey

Anti-ARSE/ASE/ARSL Antibody Picoband® (A10294-2) Images



Western blot analysis of ARSE/ASE/ARSL using anti-ARSE/ASE/ARSL antibody (A10294-2). Electrophoresis was performed on a 5-20% SDS-PAGE gel at 70V (Stacking gel) / 90V (Resolving gel) for 2-3 hours. The sample well of each lane was loaded with 50ug of sample under reducing conditions. Lane 1: human Hek293 whole cell lysates, Lane 2: monkey Cos-7 whole cell lysates, Lane 3: human HK-2 whole cell lysates. After Electrophoresis, proteins were transferred to a Nitrocellulose membrane at 150mA for 50-90 minutes. Blocked the membrane with 5% Non-fat Milk/TBS for 1.5 hour at RT. The membrane was incubated with rabbit anti-ARSE/ASE/ARSL antigen affinity purified polyclonal antibody (Catalog # A10294-2) at 0.5 ug/mL overnight at 4°C, then washed with TBS-0.1%Tween 3 times with 5 minutes each and probed with a goat anti-rabbit IgG-HRP secondary antibody at a dilution of 1:5000 for 1.5 hour at RT. The signal is developed using an Enhanced Chemiluminescent detection (ECL) kit (Catalog # EK1002) with Tanon 5200 system. A specific band was detected for ARSE/ASE/ARSL at approximately 66KD. The expected band size for ARSE/ASE/ARSL is at 66KD.

Submit a product review to [Biocompare.com](https://www.biocompare.com)

Submit a review of this product to [Biocompare.com](https://www.biocompare.com) to receive a \$20 Amazon.com giftcard! Your reviews help your fellow scientists make the right decisions. Thank you for your contribution.



Anti-ARSE/ASE/ARSL Antibody

For Research Use Only. Not for use in diagnostic procedures.