

Anti-MRPS22 Antibody

Catalog Number: A10300

About MRPS22

Mammalian mitochondrial ribosomal proteins are encoded by nuclear genes and help in protein synthesis within the mitochondrion. Mitochondrial ribosomes (mitoribosomes) consist of a small 28S subunit and a large 39S subunit. They have an estimated 75% protein to rRNA composition compared to prokaryotic ribosomes, where this ratio is reversed. Another difference between mammalian mitoribosomes and prokaryotic ribosomes is that the latter contain a 5S rRNA. Among different species, the proteins comprising the mitoribosome differ greatly in sequence, and sometimes in biochemical properties, which prevents easy recognition by sequence homology. This gene encodes a 28S subunit protein that does not seem to have a counterpart in prokaryotic and fungal-mitochondrial ribosomes. This gene lies telomeric of and is transcribed in the opposite direction from the forkhead box L2 gene. A pseudogene corresponding to this gene is found on chromosome Xq.

Crisponi L., Nat. Genet. 27:159-166(2001).

Li Y., Submitted (JAN-2000) to the EMBL/GenBank/DDBJ databases.

The MGC Project Team; Genome Res. 14:2121-2127(2004).

Overview

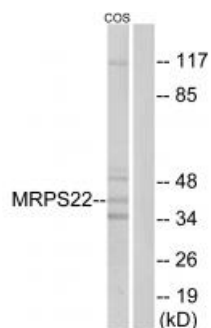
Product Name	Anti-MRPS22 Antibody
Reactive Species	Human
Description	Boster Bio Anti-MRPS22 Antibody (Catalog # A10300). Tested in WB, IF applications. This antibody reacts with Human.
Application	IF, WB
Clonality	Polyclonal
Formulation	Rabbit IgG in phosphate buffered saline (without Mg ²⁺ and Ca ²⁺), pH 7.4, 150mM NaCl, 0.02% sodium azide and 50% glycerol.
Storage Instructions	Store at -20°C for one year. For short term storage and frequent use, store at 4°C for up to one month. Avoid repeated freeze-thaw cycles.
Host	Rabbit
Uniprot ID	P82650

Technical Details

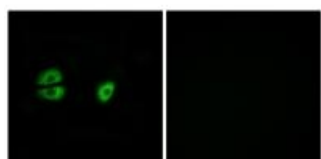
Immunogen	Synthesized peptide derived from internal of human MRPS22.
Predicted Reactive Species	Chimpanzee, Drosophila, Macaque
Isotype	IgG

Form	Liquid
Concentration	1 mg/ml
Purification	The antibody was affinity-purified from rabbit antiserum by affinity-chromatography using epitope-specific immunogen.
Suggested Dilutions	<p>Dilute the sample so that the expected range of concentrations fall within the detection range of this kit.</p> <p>If the expected range of concentration is unknown, a pilot test should be conducted to decide the optimal dilution ratio for your samples.</p> <p>Some PubMed article(s) citing the expression level of this target are as follows:</p> <p>Boster Bio's internal QC testing used:</p> <p>Western blotting: 1:500~1:3000</p> <p>Immunofluorescence: 1:100~1:500</p>

Anti-MRPS22 Antibody (A10300) Images



Western blot analysis of extracts from COS cells, using MRPS22 antibody A10300.



Immunofluorescence analysis of A549 cells, using MRPS22 antibody A10300.

Submit a product review to Biocompare.com

Submit a review of this product to Biocompare.com to receive a \$20 Amazon.com giftcard! Your reviews help your fellow scientists make the right decisions. Thank you for your contribution.



Anti-MRPS22 Antibody