

## Anti-MRP-S22 Antibody

Catalog Number: A10300S22-1

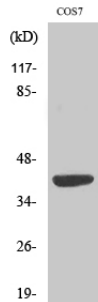
### Overview

Product Name	Anti-MRP-S22 Antibody
Reactive Species	Bovine, Cow, Hamster, Human, Monkey
Description	Boster Bio Anti-MRP-S22 Antibody catalog # A10300S22-1. Tested in ELISA, IF, IHC, WB applications. This antibody reacts with Human, Monkey.
Application	ELISA, IF, IHC, WB
Clonality	Polyclonal
Formulation	Liquid in PBS containing 50% glycerol, 0.5% stabilizing protein and 0.02% sodium azide. This antibody is supplied in a stabilized formulation. Compatibility with conjugation reactions depends on the chemistry of the conjugation method used. For conjugation methods that are not compatible with the stabilizing components present in this formulation, a carrier-free antibody format is required.
Storage Instructions	Store at -20°C for one year. For short term storage and frequent use, store at 4°C for up to one month. Avoid repeated freeze-thaw cycles.
Host	Rabbit
Uniprot ID	P82650

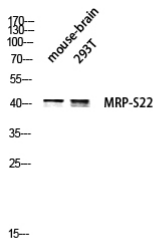
### Technical Details

Immunogen	The antiserum was produced against synthesized peptide derived from human MRPS22. AA range:231-280
Isotype	IgG
Form	Liquid
Concentration	1 mg/ml
Purification	The antibody was affinity-purified from rabbit antiserum by affinity-chromatography using epitope-specific immunogen.
Suggested Dilutions	WB 1:500-1:2000 IHC 1:100-1:300 IF 1:200-1:1000 ELISA 1:40000

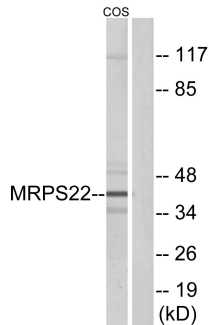
## Anti-MRP-S22 Antibody (A10300S22-1) Images



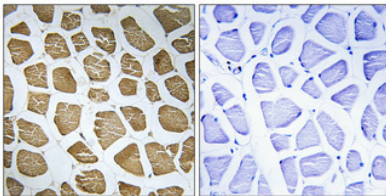
Western Blot analysis of various cells using MRP-S22 Polyclonal Antibody



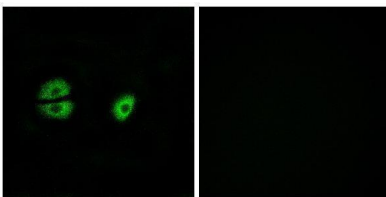
Western blot analysis of mouse-brain 293T lysis using MRP-S22 antibody.



Western blot analysis of lysates from COS cells, using MRPS22 Antibody. The lane on the right is blocked with the synthesized peptide.



Immunohistochemical analysis of paraffin-embedded Human skeletal muscle. Antibody was diluted at 1:100 (4° overnight). High-pressure and temperature Tris-EDTA, pH8.0 was used for antigen retrieval. Negative control (right) obtained from antibody was pre-absorbed by immunogen peptide.



Immunofluorescence analysis of A549 cells, using MRPS22 Antibody. The picture on the right is blocked with the synthesized peptide.

Submit a product review to [Biocompare.com](https://www.biocompare.com)



Submit a review of this product to Biocompare.com to receive a \$20 Amazon.com giftcard! Your reviews help your fellow scientists make the right decisions. Thank you for your contribution.

### Anti-MRP-S22 Antibody

For Research Use Only. Not for use in diagnostic procedures.