

Anti-ILP-2 BIRC8 Antibody

Catalog Number: A10326

About BIRC8

Apoptosis, or programmed cell death, is related to many diseases, such as cancer. Apoptosis is triggered by a variety of stimuli including members in the TNF family and prevented by the inhibitor of apoptosis (IAP) proteins. IAP proteins form a conserved gene family including IAP, XIAP/ILP-1/MIHA, and Livin/KIAP that bind to and inhibits specific proteases. A novel member in the IAP protein family was recently identified and designated ILP-2 for IAP-like protein-2. ILP-2 has high homology to ILP-1, but is encoded by a distinct gene that is solely expressed in testis of tested normal human tissues. ILP-2, unlike ILP-1, has no inhibitory effect on Fas and TNF induced apoptosis, but potently inhibits apoptosis induced by overexpression of Bax or by coexpression of caspase-9 with Apaf-1. ILP-2 interacts with the processed caspase-9. These results suggest that ILP-2 is a novel IAP family member with restricted specificity for caspase-9.

Overview

Product Name	Anti-ILP-2 BIRC8 Antibody
Reactive Species	Human, Mouse, Rat
Description	Boster Bio Anti-ILP-2 BIRC8 Antibody (Catalog # A10326). Tested in ELISA, WB, ICC, IF applications. This antibody reacts with Human, Mouse, Rat.
Application	ELISA, IF, ICC, WB
Clonality	Polyclonal
Formulation	ILP-2 Antibody is supplied in PBS containing 0.02% sodium azide.
Storage Instructions	ILP-2 antibody can be stored at 4°C for three months and -20°C, stable for up to one year. Avoid repeated freeze-thaw cycles. Antibodies should not be exposed to prolonged high temperatures.
Host	Rabbit
Uniprot ID	Q96P09

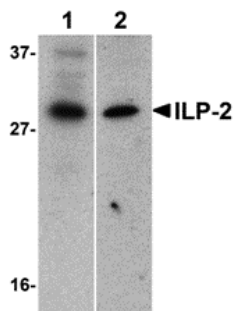
Technical Details

Immunogen	ILP-2 antibody was raised with against a synthetic peptide corresponding to amino acids near the amino terminus of human ILP-2. The immunogen is located within the first 50 amino acids of ILP-2.
Predicted Reactive Species	Bovine
Isotype	IgG
Form	Liquid
Concentration	1 mg/mL
Purification	ILP-2 Antibody is affinity chromatography purified via peptide column.

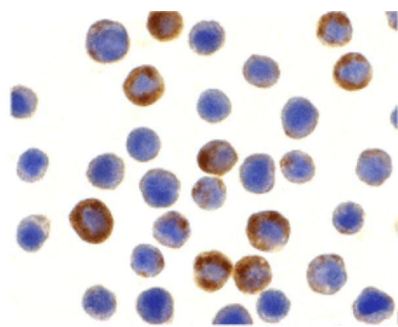
Suggested Dilutions

ILP-2 antibody can be used for detection of ILP-2 by Western blot at 1 ug/mL. A band at approximately 33 kDa can be detected. Antibody can also be used for immunocytochemistry starting at 10 ug/mL. For immunofluorescence start at 20 ug/mL.
Antibody validated: Western Blot in human samples; Immunocytochemistry in human samples and Immunofluorescence in human samples. All other applications and species not yet tested. Optimal dilutions for each application should be determined by the researcher.

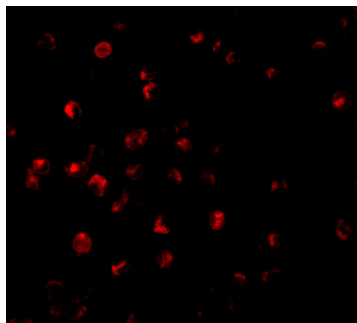
Anti-ILP-2 BIRC8 Antibody (A10326) Images



Western blot analysis of ILP-2 expression in human HepG2 (lane 1) and MOLT4 (lane 2) cell lysates with ILP-2 antibody at 1 ug/mL.



Immunocytochemistry of ILP-2 in HepG2 cells with ILP-2 antibody at 10 ug/mL.



Immunofluorescence of ILP-2 in HepG2 cells with ILP-2 antibody at 20 ug/mL.

Submit a product review to [Biocompare.com](https://www.biocompare.com)

Submit a review of this product to [Biocompare.com](https://www.biocompare.com) to receive a \$20 Amazon.com giftcard! Your reviews help your fellow scientists make the right decisions. Thank you for your contribution.



Anti-ILP-2 BIRC8 Antibody

For Research Use Only. Not for use in diagnostic procedures.