

## Anti-ATP11B Antibody

Catalog Number: A10328

### About ATP11B

ATP11B is a widely expressed integral membrane ATPase and is thought to drive the transport of phospholipids across membranes. It has been suggested that ATP11B is hormonally regulated and plays a role in the subnuclear trafficking of transcription factors with RING motifs. While the exact molecule ATP11B transports is unknown, increased mRNA expression of the homologous ATP11A has been observed in cells resistant to anti-cancer drugs such as farnesyltransferase inhibitors (FTIs), suggesting that ATP11B may also play a role in cell survival under harsh conditions.

### Overview

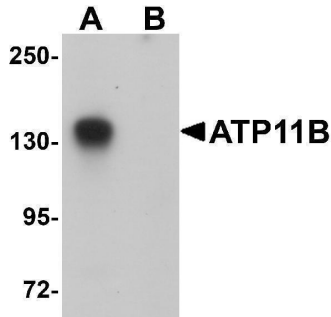
Product Name	Anti-ATP11B Antibody
Reactive Species	Human, Mouse
Description	Boster Bio Anti-ATP11B Antibody (Catalog # A10328). Tested in ELISA, WB, ICC, IF applications. This antibody reacts with Human, Mouse.
Application	ELISA, IF, ICC, WB
Clonality	Polyclonal
Formulation	ATP11B Antibody is supplied in PBS containing 0.02% sodium azide.
Storage Instructions	ATP11B antibody can be stored at 4°C for three months and -20°C, stable for up to one year. Avoid repeated freeze-thaw cycles. Antibodies should not be exposed to prolonged high temperatures.
Host	Rabbit
Uniprot ID	Q9Y2G3

### Technical Details

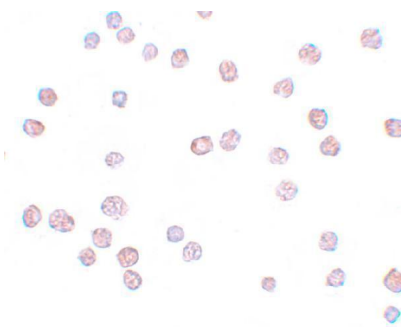
Immunogen	ATP11B antibody was raised against a 19 amino acid synthetic peptide near the amino terminus of human ATP11B. The immunogen is located within amino acids 290 - 340 of ATP11B.
Predicted Reactive Species	Rabbit
Isotype	IgG
Form	Liquid
Concentration	1 mg/mL
Purification	ATP11B Antibody is affinity chromatography purified via peptide column.
Suggested Dilutions	ATP11B antibody can be used for detection of ATP11B by Western blot at 1 ug/mL. Antibody can also be used for immunocytochemistry starting at 10 ug/mL. For immunofluorescence start at 20 ug/mL.

Antibody validated: Western Blot in human samples; Immunocytochemistry in human samples and Immunofluorescence in human samples. All other applications and species not yet tested. Optimal dilutions for each application should be determined by the researcher.

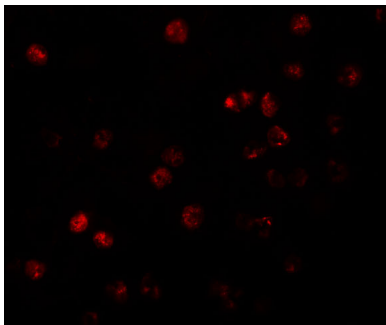
## Anti-ATP11B Antibody (A10328) Images



Western blot analysis of ATP11B in K562 cell tissue lysate with ATP11B antibody at 1 ug/mL in (A) the absence and (B) the presence of blocking peptide.



Immunocytochemistry of ATP11B in K562 cells with ATP11B antibody at 10 ug/mL.



Immunofluorescence of ATP11B in K562 cells with ATP11B antibody at 20 ug/mL.

### Submit a product review to [Biocompare.com](https://www.biocompare.com)

Submit a review of this product to [Biocompare.com](https://www.biocompare.com) to receive a \$20 Amazon.com giftcard! Your reviews help your fellow scientists make the right decisions. Thank you for your contribution.



Anti-ATP11B Antibody

For Research Use Only. Not for use in diagnostic procedures.