

Anti-TM4SF1 Antibody

Catalog Number: A10368

About TM4SF1

TM4SF1 is a member of the transmembrane 4 superfamily, also known as the tetraspanin family. Most of these members are cell-surface proteins that are characterized by the presence of four hydrophobic domains and mediate signal transduction events that play a role in the regulation of cell development, activation, growth and motility. TM4SF1 is a cell surface antigen and is highly expressed in the vascular endothelium of several human cancers. Knockdown experiments of TM4SF1 prevented filopodia formation, inhibited cell mobility, blocked cytokinesis, and inhibited maturation of VEGF-A-induced angiogenesis, suggesting that TM4SF1 may be an attractive target for anti-angiogenesis therapy.

Overview

Product Name	Anti-TM4SF1 Antibody
Reactive Species	Human, Mouse, Rat
Description	Boster Bio Anti-TM4SF1 Antibody (Catalog # A10368). Tested in ELISA, WB, IHC-P, IF applications. This antibody reacts with Human, Mouse, Rat.
Application	ELISA, IF, IHC-P, WB
Clonality	Polyclonal
Formulation	TM4SF1 Antibody is supplied in PBS containing 0.02% sodium azide.
Storage Instructions	TM4SF1 antibody can be stored at 4°C for three months and -20°C, stable for up to one year. Avoid repeated freeze-thaw cycles. Antibodies should not be exposed to prolonged high temperatures.
Host	Rabbit
Uniprot ID	P30408

Technical Details

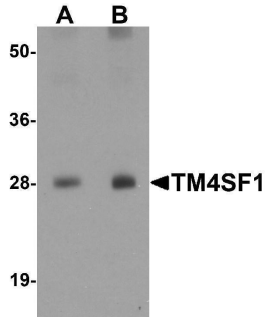
Immunogen	TM4SF1 antibody was raised against an 18 amino acid synthetic peptide near the amino terminus of human TM4SF1. The immunogen is located within the first 50 amino acids of TM4SF1.
Predicted Reactive Species	Rabbit
Cross Reactivity	At least three isoforms of TM4SF1 are known to exist; this antibody will recognize only the two largest isoforms. TM4SF1 antibody is predicted to not cross-react with other tetraspanin proteins.
Isotype	IgG
Form	Liquid
Concentration	1 mg/mL
Purification	TM4SF1 Antibody is affinity chromatography purified via peptide column.

Suggested Dilutions

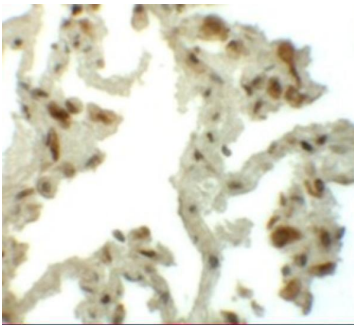
TM4SF1 antibody can be used for detection of TM4SF1 by Western blot at 0.5 - 1 ug/mL. Antibody can also be used for immunohistochemistry starting at 5 ug/mL. For immunofluorescence start at 20 ug/mL.

Antibody validated: Western Blot in human samples; Immunohistochemistry in human and mouse samples and Immunofluorescence in human and mouse samples. All other applications and species not yet tested. Optimal dilutions for each application should be determined by the researcher.

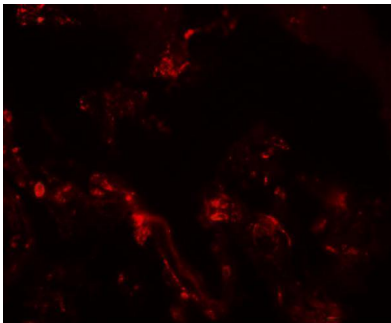
Anti-TM4SF1 Antibody (A10368) Images



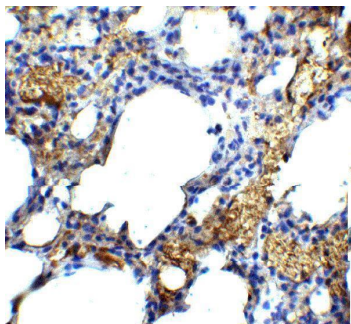
Western blot analysis of TM4SF1 in human lung tissue lysate with TM4SF1 antibody at (A) 0.5 and (B) 1 ug/mL.



Immunohistochemistry of TM4SF1 in human lung tissue with TM4SF1 antibody at 5 ug/mL.

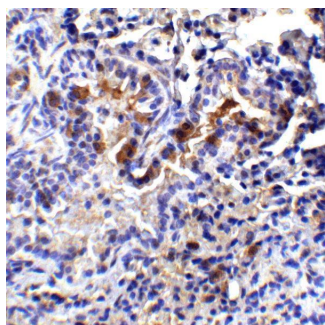
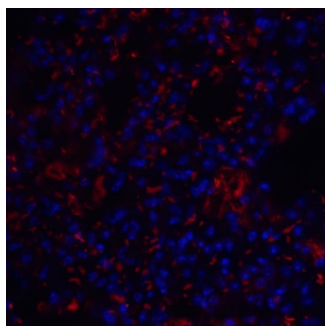


Immunofluorescence of TM4SF1 in human lung tissue with TM4SF1 antibody at 20 ug/mL.



Immunohistochemistry of TM4SF1 in mouse lung tissue with TM4SF1 antibody at 5 ug/mL.

Immunofluorescence of TM4SF1 in mouse lung tissue with TM4SF1 antibody at 20 ug/mL. Red: TM4SF1 Antibody (A10368) Blue: DAPI staining



Immunohistochemistry of TM4SF1 in mouse lung tissue with TM4SF1 antibody at 2 ug/mL.

Submit a product review to Biocompare.com

Submit a review of this product to Biocompare.com to receive a \$20 Amazon.com giftcard! Your reviews help your fellow scientists make the right decisions. Thank you for your contribution.



Anti-TM4SF1 Antibody

For Research Use Only. Not for use in diagnostic procedures.