

Anti-SERC1 SERINC1 Antibody

Catalog Number: A10374-1

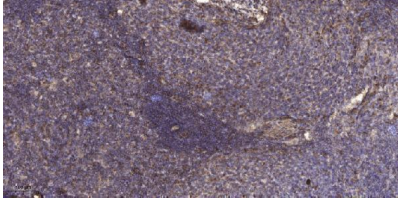
Overview

| | |
|----------------------|---|
| Product Name | Anti-SERC1 SERINC1 Antibody |
| Reactive Species | Human, Mouse, Rat |
| Description | Boster Bio Anti-SERC1 SERINC1 Antibody (Catalog# A10374-1). Tested in WB, IHC, ICC, IF, ELISA applications. This antibody reacts with Human, Mouse, Rat. |
| Application | ELISA, IF, IHC, ICC, WB |
| Clonality | Polyclonal |
| Formulation | PBS containing 50% glycerol, 0.5% stabilizing protein and 0.02% sodium azide. This antibody is supplied in a stabilized formulation. Compatibility with conjugation reactions depends on the chemistry of the conjugation method used. For conjugation methods that are not compatible with the stabilizing components present in this formulation, a carrier-free antibody format is required. |
| Storage Instructions | Store at -20°C for one year. For short-term storage and frequent use, store at 4°C for up to one month. Avoid repeated freeze-thaw cycles. |
| Host | Rabbit |
| Uniprot ID | Q9NRX5 |

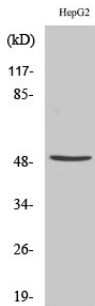
Technical Details

| | |
|---------------------|--|
| Immunogen | A peptide derived from human SERC1. Immunogen sequence location: 381-430 |
| Isotype | Rabbit IgG |
| Form | Liquid |
| Concentration | 0.5-1mg/ml, actual concentration vary by lot. Use suggested dilution ratio to decide dilution procedure. |
| Purification | The antibody was purified from rabbit antiserum by affinity-chromatography using immunogen. |
| Suggested Dilutions | WB 1:500 - 1:2000. IHC 1:100 - 1:300. ICC/IF 1:200 - 1:1000. ELISA: 1:20000. Not yet tested in other applications. |

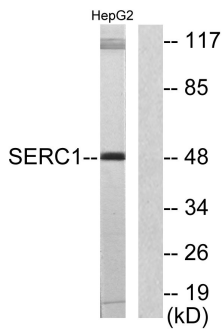
Anti-SERC1 SERINC1 Antibody (A10374-1) Images



Immunohistochemical analysis of paraffin-embedded human cervical carcinoma. 1, Antibody was diluted at 1:200(4° overnight). 2, Tris-EDTA,pH9.0 was used for antigen retrieval. 3,Secondary antibody was diluted at 1:200(room temperature, 45min).



Western Blot analysis of various cells using Serinc1 Polyclonal Antibody



Western blot analysis of lysates from HepG2 cells, using SERC1 Antibody. The lane on the right is blocked with the synthesized peptide.

Submit a product review to Biocompare.com

Submit a review of this product to Biocompare.com to receive a \$20 Amazon.com giftcard! Your reviews help your fellow scientists make the right decisions. Thank you for your contribution.



Anti-SERC1 SERINC1 Antibody

For Research Use Only. Not for use in diagnostic procedures.