

Anti-SIPA1L3 Antibody

Catalog Number: A10403

About SIPA1L3

Signal-induced proliferation associated-like protein 2 (SIPA1L3) is a member of the SIPA1 family of RapGAPs. SIPA1L3 was cloned as a novel molecular component of tight junctions and adherens junctions, suggesting that may function to balance Rap1 by counteracting RapGEFs. Recent studies of SIPA indicate that its deregulation can cause myeloproliferative stem cell disorders in mice and increased metastases in human cancers. Other studies suggest SIPA1L1 may play important roles in embryo development and control of cell proliferation. Based on the amount of homology between SIPA family members, it is possible that SIPA1L3 plays other roles development and cell proliferation.

Overview

Product Name	Anti-SIPA1L3 Antibody
Reactive Species	Human, Mouse, Rat
Description	Boster Bio Anti-SIPA1L3 Antibody (Catalog # A10403). Tested in ELISA, WB, IHC-P, IF applications. This antibody reacts with Human, Mouse, Rat.
Application	ELISA, IF, IHC-P, WB
Clonality	Polyclonal
Formulation	SIPA1L3 Antibody is supplied in PBS containing 0.02% sodium azide.
Storage Instructions	SIPA1L3 antibody can be stored at 4°C for three months and -20°C, stable for up to one year. Avoid repeated freeze-thaw cycles. Antibodies should not be exposed to prolonged high temperatures.
Host	Rabbit
Uniprot ID	O60292

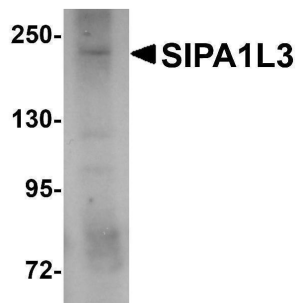
Technical Details

Immunogen	SIPA1L3 antibody was raised against a 15 amino acid synthetic peptide from near the amino terminus of human SIPA1L3. The immunogen is located within amino acids 80 - 130 of SIPA1L3.
Predicted Reactive Species	Rabbit
Isotype	IgG
Form	Liquid
Concentration	1 mg/mL
Purification	SIPA1L3 Antibody is affinity chromatography purified via peptide column.
Suggested Dilutions	SIPA1L3 antibody can be used for detection of SIPA1L3 by Western blot at 1 ug/mL. Antibody can also be used for immunohistochemistry starting at 5 ug/mL. For immunofluorescence start at 20

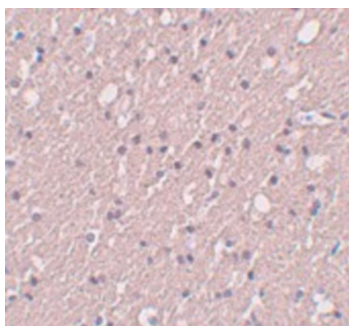
ug/mL.

Antibody validated: Western Blot in human samples; Immunohistochemistry in human samples and Immunofluorescence in human samples. All other applications and species not yet tested. Optimal dilutions for each application should be determined by the researcher.

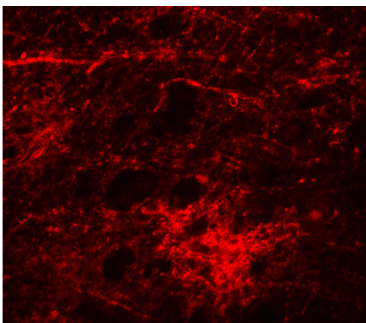
Anti-SIPA1L3 Antibody (A10403) Images



Western blot analysis of SIPA1L3 in SK-N-SH lysate with SIPA1L3 antibody at 1 ug/mL.



Immunohistochemistry of SIPA1L3 in human brain tissue with SIPA1L3 antibody at 5 ug/mL.



Immunofluorescence of SIPA1L3 in Human Brain cells with SIPA1L3 antibody at 20 ug/mL.

Submit a product review to [Biocompare.com](https://www.biocompare.com)

Submit a review of this product to [Biocompare.com](https://www.biocompare.com) to receive a \$20 Amazon.com giftcard! Your reviews help your fellow scientists make the right decisions. Thank you for your contribution.



Anti-SIPA1L3 Antibody

For Research Use Only. Not for use in diagnostic procedures.