

Anti-GNG5 Antibody

Catalog Number: A10414

About GNG5

Mammalian mitochondrial ribosomal proteins are encoded by nuclear genes and help in protein synthesis within the mitochondrion. Mitochondrial ribosomes (mitoribosomes) consist of a small 28S subunit and a large 39S subunit. They have an estimated 75% protein to rRNA composition compared to prokaryotic ribosomes, where this ratio is reversed. Another difference between mammalian mitoribosomes and prokaryotic ribosomes is that the latter contain a 5S rRNA. Among different species, the proteins comprising the mitoribosome differ greatly in sequence, and sometimes in biochemical properties, which prevents easy recognition by sequence homology. This gene encodes a 39S subunit protein which forms homodimers. In prokaryotic ribosomes, two L7/L12 dimers and one L10 protein form the L8 protein complex.

Marty L., J. Biol. Chem. 271:11468-11476(1996).

Liu J., Submitted (APR-1998) to the EMBL/GenBank/DDBJ databases.

The MGC Project Team; Genome Res. 14:2121-2127(2004).

Overview

Product Name	Anti-GNG5 Antibody
Reactive Species	Human, Mouse, Rat
Description	Boster Bio Anti-GNG5 Antibody catalog # A10414. Tested in WB applications. This antibody reacts with Human,Mouse,Rat.
Application	WB
Clonality	Polyclonal
Formulation	Rabbit IgG, 1mg/ml in PBS with 0.02% sodium azide, 50% glycerol, pH7.2
Storage Instructions	Store at -20°C for one year. For short term storage and frequent use, store at 4°C for up to one month. Avoid repeated freeze-thaw cycles.
Host	Rabbit
Uniprot ID	P63218

Technical Details

Immunogen	Synthesized peptide derived from internal of human MRPL12.
Predicted Reactive Species	Chimpanzee, Drosophila, Macaque
Isotype	IgG
Form	Liquid

Concentration	1 mg/ml
Purification	The antibody was affinity-purified from rabbit antiserum by affinity-chromatography using epitope-specific immunogen and the purity is > 95% (by SDS-PAGE).
Suggested Dilutions	<p>Dilute the sample so that the expected range of concentrations fall within the detection range of this kit.</p> <p>If the expected range of concentration is unknown, a pilot test should be conducted to decide the optimal dilution ratio for your samples.</p> <p>Some PubMed article(s) citing the expression level of this target are as follows:</p> <p>Boster Bio's internal QC testing used:</p> <p>WB: 1:500-1:1000</p>

Anti-GNG5 Antibody (A10414) Images

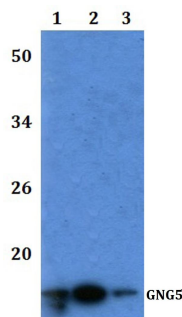


Figure 1. Western blotting validation for Anti-GNG5 Antibody A10414

Western blot (WB) analysis of GNG5 polyclonal antibody at 1:500 dilution Lane1:HEK293T whole cell lysate Lane2:RAW264.7 whole cell lysate Lane3:H9C2 whole cell lysate

Electrophoresis was performed on a SDS-PAGE gel. To determine SDS-PAGE gel concentration

Submit a product review to Biocompare.com

Submit a review of this product to Biocompare.com to receive a \$20 Amazon.com giftcard! Your reviews help your fellow scientists make the right decisions. Thank you for your contribution.



Anti-GNG5 Antibody