

Anti-RKHD3 MEX3B Antibody

Catalog Number: A10435

About MEX3B

Rkhd3, also known as MEX3B is a member of a novel family of four homologous human MEX3 proteins each containing two heterogeneous nuclear ribonucleoprotein K homology (KH) domains and one carboxy-terminal RING finger module. MEX3 proteins, including Rkhd3, are phosphoproteins that bind RNA through their KH domains and shuttle between the nucleus and the cytoplasm via the CRM1 export pathway. These proteins are a novel family of evolutionarily conserved RNA-binding proteins, differentially recruited to P bodies and potentially involved in post-transcriptional regulatory mechanisms. Rkhd3 is thought to act as a mechanism to fine-tune mRNA regulation in early *Xenopus* development, and with Rkhd4, but not Rkhd1, will co-localize with both the hDcp1a decapping factor and Argonaute (Ago) proteins in processing bodies (P bodies), recently characterized as centers of mRNA turnover.

Overview

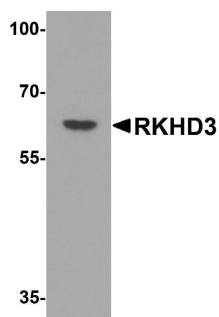
Product Name	Anti-RKHD3 MEX3B Antibody
Reactive Species	Human, Mouse, Rat
Description	Boster Bio Anti-RKHD3 MEX3B Antibody (Catalog # A10435). Tested in ELISA, WB, IF applications. This antibody reacts with Human, Mouse, Rat.
Application	ELISA, IF, WB
Clonality	Polyclonal
Formulation	RKHD3 Antibody is supplied in PBS containing 0.02% sodium azide.
Storage Instructions	RKHD3 antibody can be stored at 4°C for three months and -20°C, stable for up to one year. Avoid repeated freeze-thaw cycles. Antibodies should not be exposed to prolonged high temperatures.
Host	Rabbit
Uniprot ID	Q6ZN04

Technical Details

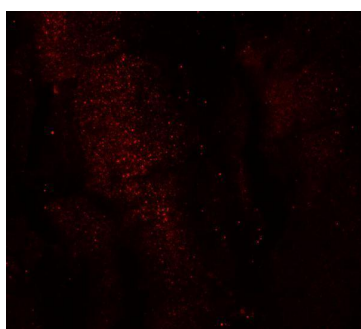
Immunogen	RKHD3 antibody was raised against a 16 amino acid synthetic peptide from near the center of human RKHD3. The immunogen is located within amino acids 180 - 230 of RKHD3.
Predicted Reactive Species	Bovine, Mouse, Rat
Cross Reactivity	This antibody is specific for RKHD3 and will not recognize the other RKHD3 family of proteins.
Isotype	IgG
Form	Liquid
Concentration	1 mg/mL

Purification	RKHD3 Antibody is affinity chromatography purified via peptide column.
Suggested Dilutions	RKHD3 antibody can be used for detection of EPAC1 by Western blot at 1 ug/mL. Antibody can also be used for immunofluorescence starting at 20 ug/mL. For immunofluorescence start at 20 ug/mL. Antibody validated: Western Blot in human samples and Immunofluorescence in mouse samples. All other applications and species not yet tested. Optimal dilutions for each application should be determined by the researcher.

Anti-RKHD3 MEX3B Antibody (A10435) Images



Western blot analysis of RKHD3 in human testis tissue lysate with RKHD3 antibody at 1 ug/mL.



Immunofluorescence of RKHD3 in mouse skeletal muscle cells with RKHD3 antibody at 20 ug/mL.

Submit a product review to [Biocompare.com](https://www.biocompare.com)

Submit a review of this product to [Biocompare.com](https://www.biocompare.com) to receive a \$20 Amazon.com giftcard! Your reviews help your fellow scientists make the right decisions. Thank you for your contribution.



Anti-RKHD3 MEX3B Antibody

For Research Use Only. Not for use in diagnostic procedures.