

Anti-FK506-binding protein 15 FKBP15 Antibody

Catalog Number: A10447

About FKBP15

FKBP15, also known as FKBP133, is a member of the FK506-binding protein family, a group of proteins initially identified as immunophilins, targets for the immunosuppressant drugs FK506 and Rapamycin. FKBP15 is expressed in the developing nervous system and contains a domain similar to Wiskott-Aldrich syndrome protein homology region 1 (WH1) in addition to the FK506-binding protein motif. FKBP15 is distributed along the axonal shafts and partially co-localizes with F-actin in the growth cones of dorsal root ganglion neurons; overexpression of FKBP15 resulted in the number of filopodia in transfected neurons, suggesting that FKBP15 modulates growth cone behavior. FKBP15 has also been shown to associate with both microtubules and the actin filament systems and disruption of its expression by RNAi resulted in delayed transport of early endosomes in HeLa cells indicating that FKBP15 is also involved in the transport of early endosomes. At least three isoforms of FKBP15 are known to exist.

Overview

Product Name	Anti-FK506-binding protein 15 FKBP15 Antibody
Reactive Species	Human, Mouse, Rat
Description	Boster Bio Anti-FK506-binding protein 15 FKBP15 Antibody (Catalog # A10447). Tested in ELISA, WB, IHC-P, IF applications. This antibody reacts with Human, Mouse, Rat.
Application	ELISA, IF, IHC-P, WB
Clonality	Polyclonal
Formulation	FKBP15 Antibody is supplied in PBS containing 0.02% sodium azide.
Storage Instructions	FKBP15 antibody can be stored at 4°C for three months and -20°C, stable for up to one year. Avoid repeated freeze-thaw cycles. Antibodies should not be exposed to prolonged high temperatures.
Host	Rabbit
Uniprot ID	Q5T1M5

Technical Details

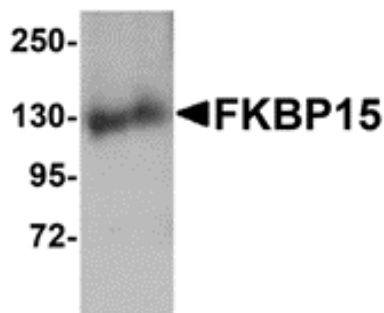
Immunogen	FKBP15 antibody was raised against a 15 amino acid synthetic peptide from near the amino terminus of human FKBP15. The immunogen is located within amino acids 30 - 80 of FKBP15.
Predicted Reactive Species	Bovine, Mouse, Rat
Isotype	IgG
Form	Liquid
Concentration	1 mg/mL
Purification	FKBP15 Antibody is affinity chromatography purified via peptide column.

Suggested Dilutions

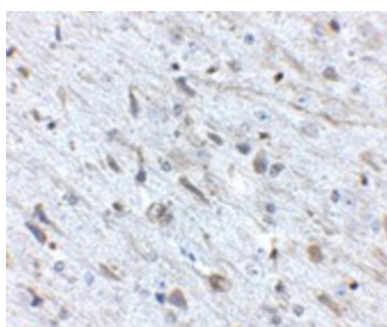
FKBP15 antibody can be used for detection of FKBP15 by Western blot at 1 ug/mL. Antibody can also be used for immunohistochemistry starting at 2.5 ug/mL. For immunofluorescence start at 20 ug/mL.

Antibody validated: Western Blot in mouse samples; Immunohistochemistry in mouse samples and Immunofluorescence in mouse samples. All other applications and species not yet tested. Optimal dilutions for each application should be determined by the researcher.

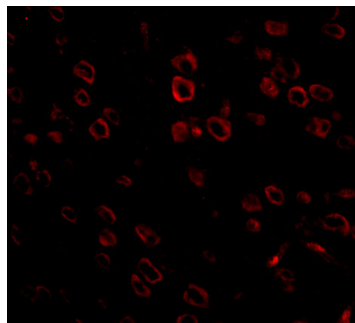
Anti-FK506-binding protein 15 FKBP15 Antibody (A10447) Images



Western blot analysis of FKBP15 in 3T3 cell lysate with FKBP15 antibody at 1 ug/mL.



Immunohistochemistry of FKBP15 in mouse brain tissue with FKBP15 antibody at 2.5 ug/mL.



Immunofluorescence of FKBP15 in mouse brain tissue with FKBP15 antibody at 20 ug/mL.

Submit a product review to [Biocompare.com](https://www.biocompare.com)

Submit a review of this product to [Biocompare.com](https://www.biocompare.com) to receive a \$20 Amazon.com giftcard! Your reviews help your fellow scientists make the right decisions. Thank you for your contribution.



Anti-FK506-binding protein 15 FKBP15 Antibody

For Research Use Only. Not for use in diagnostic procedures.