

Anti-GTPBP4 Antibody

Catalog Number: A10450

About GTPBP4

Releases the supercoiling and torsional tension of DNA introduced during the DNA replication and transcription by transiently cleaving and rejoining one strand of the DNA duplex. Introduces a single-strand break via transesterification at a target site in duplex DNA. The scissile phosphodiester is attacked by the catalytic tyrosine of the enzyme, resulting in the formation of a DNA-(5'-phosphotyrosyl)-enzyme intermediate and the expulsion of a 3'-OH DNA strand. The free DNA strand then undergoes passage around the unbroken strand thus removing DNA supercoils. Finally, in the religation step, the DNA 3'-OH attacks the covalent intermediate to expel the active-site tyrosine and restore the DNA phosphodiester backbone. By similarity. Possesses negatively supercoiled DNA relaxing activity.

Ng S.-W., Nucleic Acids Res. 27:993-1000(1999).

Kawasaki K., Genome Res. 7:250-261(1997).

Collins J.E., Genome Biol. 5:RESEARCH84.1-RESEARCH84.11(2004).

Overview

Product Name	Anti-GTPBP4 Antibody
Reactive Species	Human, Mouse, Rat
Description	Boster Bio Anti-GTPBP4 Antibody catalog # A10450. Tested in WB,IHC,ICC/IF applications. This antibody reacts with Human,Mouse,Rat.
Application	IF, IHC, ICC, WB
Clonality	Polyclonal
Formulation	Rabbit IgG, 1mg/ml in PBS with 0.02% sodium azide, 50% glycerol, pH7.2
Storage Instructions	Store at -20°C for one year. For short term storage and frequent use, store at 4°C for up to one month. Avoid repeated freeze-thaw cycles.
Host	Rabbit
Uniprot ID	Q9BZE4

Technical Details

Immunogen	Synthesized peptide derived from human MUC15 protein.
Predicted Reactive Species	Chimpanzee, Drosophila, Macaque
Isotype	IgG
Form	Liquid

Concentration	1 mg/ml
Purification	The antibody was affinity-purified from rabbit antiserum by affinity-chromatography using epitope-specific immunogen and the purity is > 95% (by SDS-PAGE).
Suggested Dilutions	<p>Dilute the sample so that the expected range of concentrations fall within the detection range of this kit.</p> <p>If the expected range of concentration is unknown, a pilot test should be conducted to decide the optimal dilution ratio for your samples.</p> <p>Some PubMed article(s) citing the expression level of this target are as follows:</p> <p>Boster Bio's internal QC testing used:</p> <p>WB: 1:1000-1:2000</p> <p>IHC: 1:50-1:200</p> <p>ICC/IF: 1:50-1:200</p>

Anti-GTPBP4 Antibody (A10450) Images

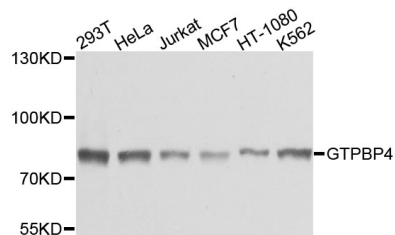


Figure 1. Western blotting validation for Anti-GTPBP4 Antibody A10450

Western blot analysis of extracts of various cells

Submit a product review to Biocompare.com

Submit a review of this product to Biocompare.com to receive a \$20 Amazon.com giftcard! Your reviews help your fellow scientists make the right decisions. Thank you for your contribution.



Anti-GTPBP4 Antibody